

Compact and wheeled excavators 6 to 15 tons



**WACKER
NEUSON**
all it takes!



Top performers on any construction site: the compact and wheeled excavators from Wacker Neuson.

1. Economic efficiency that convinces.

Every construction site is different. That's why at Wacker Neuson you can choose the perfect machine for you from a finely tiered product range of compact and wheeled excavators – whether 6 tons or 15 tons, whether tracked or wheeled, whether with or without rear projection. In any case, you get a machine that is sturdy, powerful and easy to operate – and it is even more economical due to its versatility.

2. Quality that commits.

Our bundled excavator expertise is based in Horsching near Linz. This is where our machines are developed, produced and sold to places all around the world. We ensure the highest quality standards in all process steps. After all, each of our excavators bears a special quality seal: "Made in Austria" reliability.

3. Customer proximity that leaves nothing to be desired.

Your requirements are our incentive. We not only offer you a large selection of excavators, but also a variety of attachments that you can use to expand your range of applications and that allow us to meet your needs even more individually. In addition, there are comprehensive services rendered for your machines: from individual financing solutions to professional maintenance. In this way, you can focus entirely on your projects.

Wacker Neuson—all it takes!

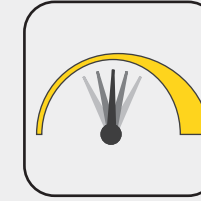
We offer products and services rendered that meet your high requirements and diverse applications. Wacker Neuson stands for reliability. This of course also applies to our extensive product range of excavators. We do our best every day to ensure your success. And we do this full of passion for our jobs.

Excavator expertise down to the last detail.



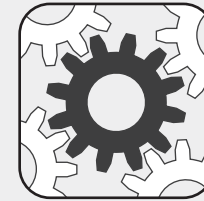
Efficiency

- **LUDV (load-independent flow distribution):** comfortable, fatigue-free control independent of the load to be moved
- **Thermal stability:** constant work performance at ambient temperatures of up to 45 degrees Celsius
- **Wide range of options available ex work:** individual equipment as desired



Versatility

- **Control circuits (AUX I-V):** up to 5 auxiliary control circuits ex work
- **High machine utilization** due to numerous attachments ex work
- **Customer colors:** If desired, we also paint in special colors
- **Innovative front windshield system** for optimal ventilation in any weather



Maintenance

- **Optimal service accesses** thanks to the tiltable cabins
- **Long service life** thanks to the high-quality components and processes
- **Shortened maintenance:** Diagnostic tool WANDA makes troubleshooting easier



Safety

- **Intuitive operation** via joystick, display, jog dial and keypad
- **Large comfort cabin** with custom setting possibilities
- **Very good view** of the entire work area
- **EquipCare** for optimum transparency in fleet management

All compact and wheeled excavators up to 15 tons from this brochure in an overview.



ET65

Shipping weight:

5,806–6,682 kg
> Page 04



EZ80

7,588–8,877 kg
> Page 04



ET90

8,348–9,625 kg
> Page 04



ET145

14,917–15,701 kg
> Page 16



EW65

6,472–7,720 kg
> Page 22



EW100

9,241–10,461 kg
> Page 28

Mini-excavators up to 6 tons.

(More information in the brochure "Mini-excavators" or at www.wackerneuson.com)



EZ17e

1,681 kg



803

932–992 kg



ET16

1,402–1,602 kg



EZ17

1,596–1,822 kg



ET18, ET20, ET24

1,582–2,401 kg



EZ26

2,596–3,222 kg



ET35, EZ36

3,418–4,452 kg



ET42, EZ50, ET58

3,817–5,630 kg

The ET65 with articulated boom and 3-point kinematics is the flexible performance machine for quick cycle times

The EZ80 combines compact dimensions with excellent digging power – for best performances in a small space

The ET90 impresses with excellent engine and hydraulic performance - concentrated power that remains perfectly under control thanks to the load-sensing system

Power and efficiency times three: the tracked excavators ET65, EZ80 and ET90.

	ET65	EZ80	ET90
Shipping weight (kg)	5,806–6,682	7,588–8,877	8,348–9,625
Digging depth with short and long dipper stick (mm)	3,893*–4,193*	3,919–4,169	4,379*–4,679*
Engine output (kW)	42	42	55.4

* with articulated boom

Diesel particulate filter
to meet country-specific
statutory emission regulations

Efficient drive system
for high performance

Low tank filler point for easier
refueling without climbing

Compact and maneuverable due to
intelligent arrangement of
the components and low
height of machine

High stability due to a
low center of gravity and
optional additional rear
counterweight

**Optimal maintenance
access** for quick favorably
priced service

Large and sturdy aluminum radiator
easy to clean and with the best
cooling performance in its class

100% power up to 45°C
ambient temperature

Comfort cabin that can be
adjusted to any operator size

8 large tie-downs
for safe transport

Depending on the model, **different
track versions** to choose from

**Two operating modes to
choose from:** full power
(POWER) or save fuel (ECO)

Up to 7 headlights
for the optimal illumination of the
work area (optionally also LEDs)

Short hydraulic hoses for less
power loss and a long service life

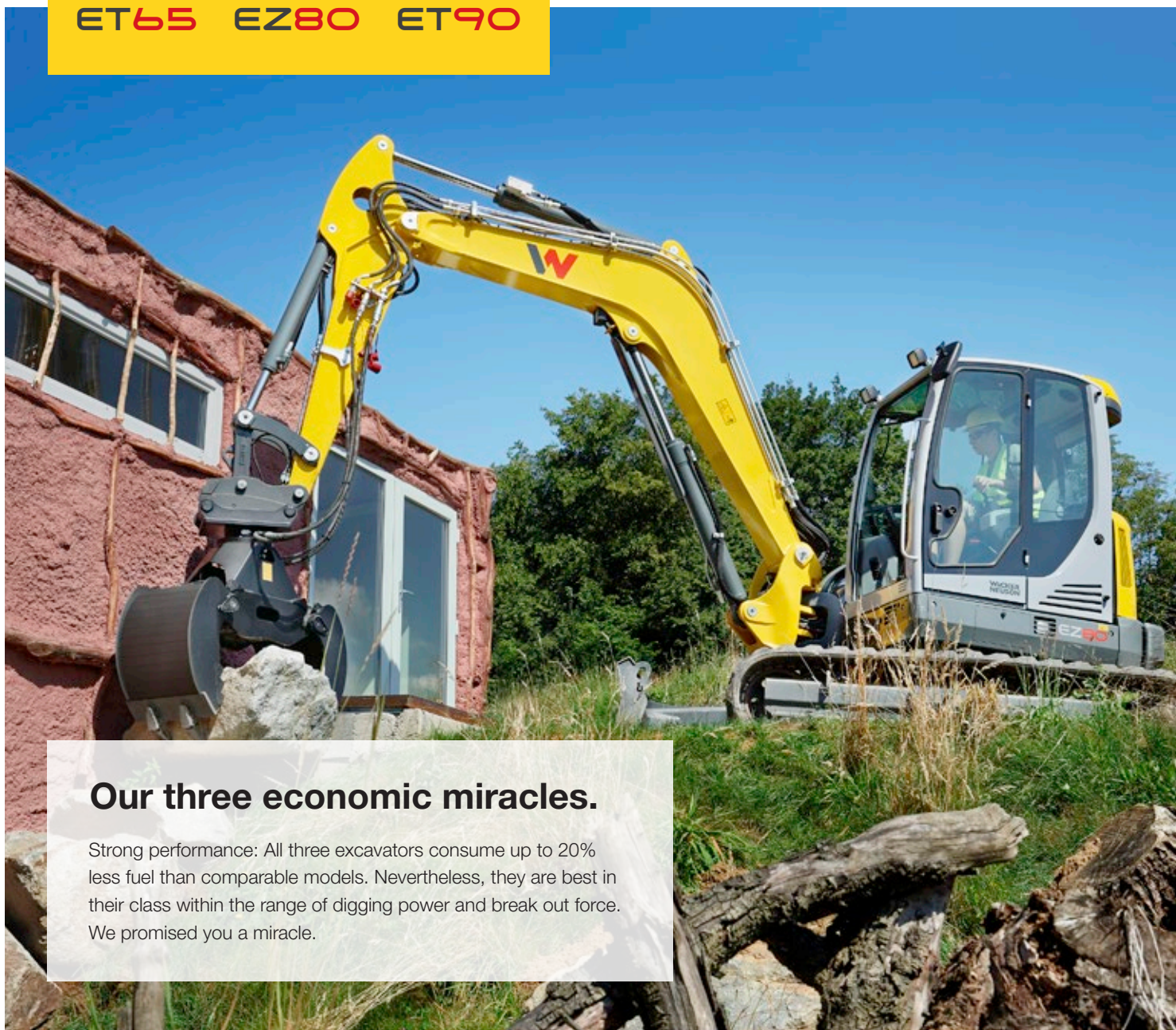
Versatile in use due to up to
5 additional control circuits ex work

**Precise control with any
load** thanks to load-sensing
hydraulic system with LUDV

3-point kinematics
increases the insertion depth
and digging power

Articulated boom for bigger
digging radius and less repositioning
(optional with ET65 and ET90)





Our three economic miracles.

Strong performance: All three excavators consume up to 20% less fuel than comparable models. Nevertheless, they are best in their class within the range of digging power and break out force. We promised you a miracle.

Unique 3-point kinematics.

The higher torque or the 3-point kinematics as well as the 200°-expanded angle of rotation make the ET65 and ET90 the best in their class in terms of digging power.

- Optimal insertion angle rotation of the bucket
- Digs even deeper vertically
- More powerful excavating
- Improved dumping behavior and less material loss

Up to 20% more break out force

Vertical insertion depth: + 5%



Total angle of rotation: 200°

More leeway thanks to articulated boom.

The articulated boom provides you with more maneuverability and therefore greater freedom of action. Because the additional joint permits the bucket to be pulled right up to the travel gear or the dozer blade. Ideal when narrow spaces need to be overcome or an obstacle has to be moved out of the way. The articulated boom is optionally available with the ET65 and ET90 - unique in these classes!



Available with a short and long dipper stick!

■ Monobloc boom
■ Articulated boom

High fuel savings due to the efficient hydraulics with LUDV (load-independent flow distribution).

Your benefits:

Up to +30% Productivity



Up to 20% less consumption

Articulated boom, optional for ET65 and ET90, improves range, digging depth and dumping height.





Default settings at the touch of a push button:
With jog dial, e.g. save and access liter quantity or saving/retrieving release for attachments.

Ventilate flexibly and communicate easily –
thanks to the innovative windshield system without removing the panes.



More cabin comfort.

Maximum operating comfort is standard with the ET65, EZ80 and ET90. In addition, we offer you numerous options to adjust your excavator to your individual requirements.

Two-part windshield that can be completely slid under the cabin roof (standard equipment)

LED headlights for even better illumination

Front sun blind standard

Optimal visibility due to the offset arm position

Fully lined cabin interior with a variety of storage compartments

Powerful air-conditioning system for a pleasant working temperature at all times

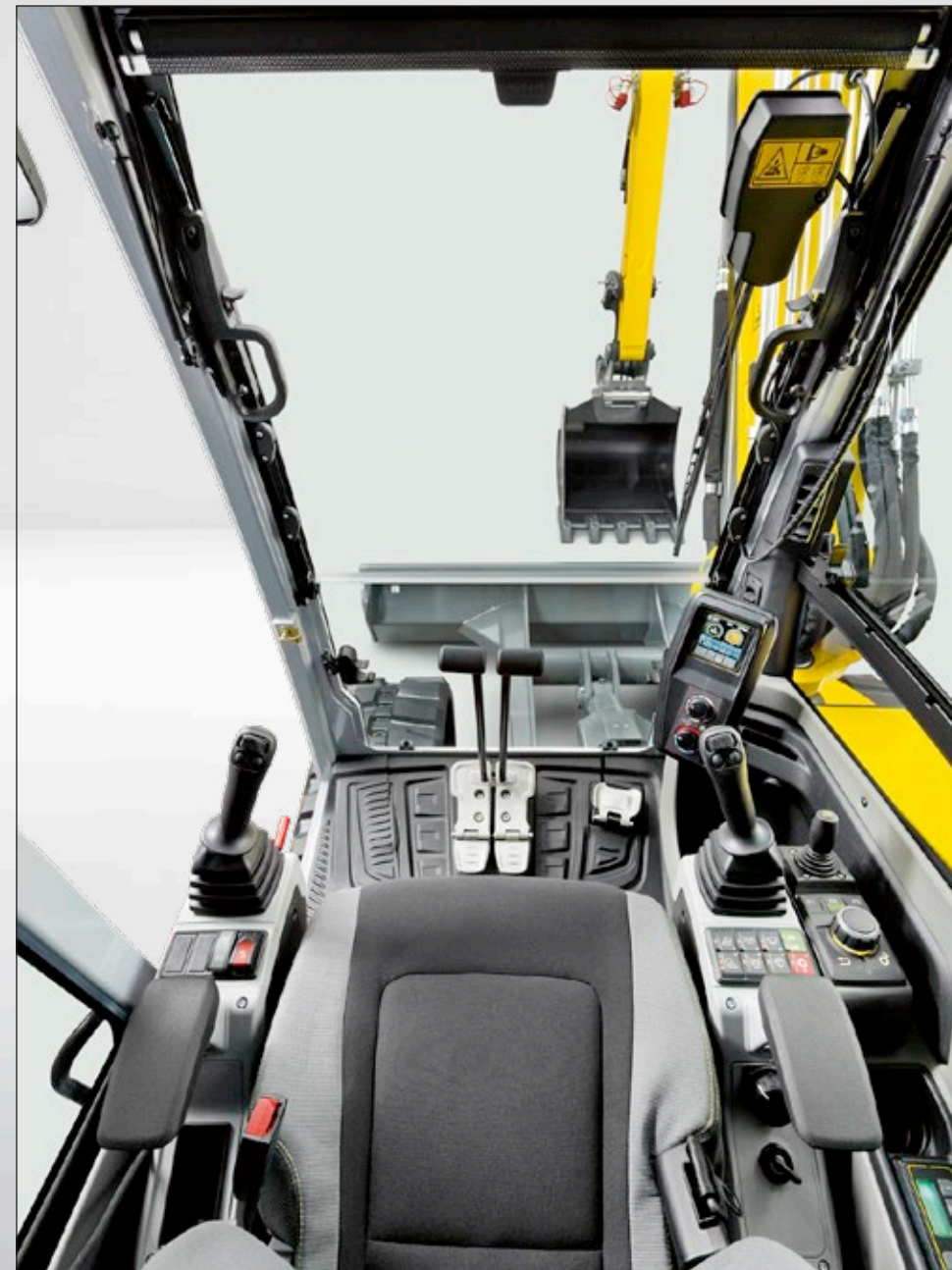
Large skylight for the best view even upwards

Rear-view camera with 7" multifunctional display for an ideal view to the rear

Lateral sliding window

Comfortable and intuitive joystick operation concept: with all important functions on both joysticks

User-friendly jog dial with individually savable settings (standard equipment)

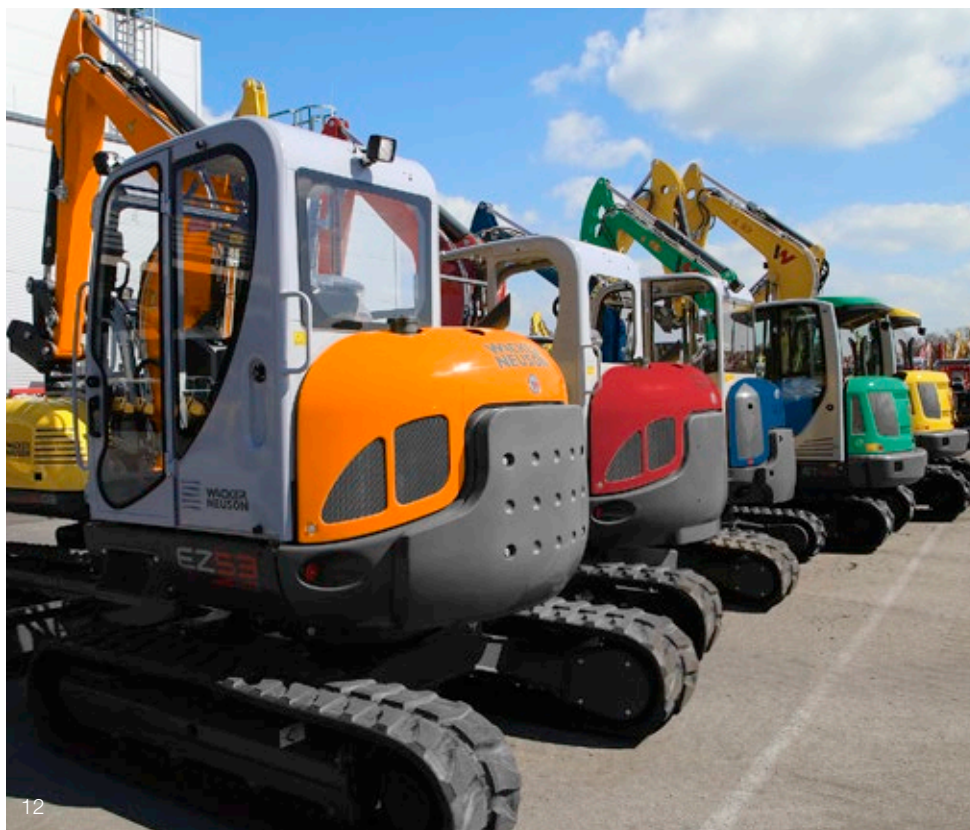


Very low noise levels in the closed cabin

Air-cushioned comfort seat including seat heating for increased operator comfort and height adjustment



Attachment carrier with many application areas thanks to up to 5 additional control circuits.



Individuality through variety.

Put together your perfect working unit from a variety of options available ex work, such as:

- Up to 5 additional control circuits, of which 3 are individually adjustable
- Diesel particulate filter
- Air-cushioned seat with seat heating
- 7 LED lights
- 4 track versions
- Custom-made paint finish in automotive quality
- Rear-view camera
- Automatic air-conditioning
- Counterweight
- Panolin hydraulic oil
- And much more

Hydraulically activated quick hitch system Easy Lock.

Change the attachment in a few seconds – using the Easy Lock hydraulic quick hitch system. To do so, the operator does not even have to get out and the new attachment is ready for use immediately. For even more flexibility and productivity.

Classic tool holding fixture, e.g. for excavation, done in a few seconds.



Reverse tool holding fixture, e.g. for moving or smoothing soil.



Powertilt: for the right setting.

The Powertilt swivel unit is available as an option and can be combined with both Easy Lock and the Lehnhoff quick hitch system. This allows the attachment to be rotated by up to 180 degrees – ideal for leveling, mulching or demolition work.



Powertilt with hydraulic Easy Lock quick coupler system.



Attachments for all applications.

Thanks to the optional additional control circuits, you can equip our excavators with a variety of attachments. Our product range includes all types of buckets, hydraulic hammers, adapter plates and much more. In this way, you can increase your application areas in no time and thus increase the utilization of your excavator.



Hydraulic hammers (kit available for every excavator)



Backhoe (with and without teeth)



Ditch or trench cleaning bucket



Swivel bucket



The EZ80 with minimal rear projection makes safe and precise working possible directly against walls.



Safe entry and exit thanks to the low entry height.

Reduced dimensions.

Whether during transportation or in tight spaces: Thanks to their compact design, the ET65, EZ80 and the ET90 can easily be taken to your next job site. And on the construction site, the machines can maneuver anywhere — even in confined spaces. You can benefit from high efficiency in all applications.

- Very low entry height
- Reduced dimensions due to the intelligent component arrangement
- Higher level of stability due to the low center of gravity

Simple maintenance. Simple repair.

The high productivity of our machines is not just due to the sturdy technology. Most service work can be completed in a short time due to quick and easily accessible maintenance points. Professional maintenance and repairs done by our technicians and original spare parts by Wacker Neuson also extend the service life of your machines.



Low emissions, high level of sustainability.

In terms of environmental friendliness, sustainability and low emissions, you are perfectly positioned with our compact excavators – even in the future. All machines meet the European emissions directives for the reduction of exhaust emission pollutants without you having to make compromises when it comes to performance, long service life or economic efficiency. In order to achieve this, we only install the latest engine technologies that are equipped with various exhaust emission aftertreatment systems.

Productive like a 14-ton excavator and small and maneuverable like a compact excavator

Constant power engine for full power at any working speed and low consumption

Up to 5 additional control circuits, of which 3 are individually adjustable, for multifunctional attachments and extensive application areas



One of the largest compacts:
the tracked excavator ET145.

	ET145
Shipping weight (kg)	14,917 – 15,701
Digging depth with short and long dipper stick (mm)	5,000 – 5,500
Engine output (kW)	55.1

Lower emissions with the same performance due to the diesel particulate filter (no SCR necessary)

2 pre-set operating modes: POWER or fuel-saving ECO mode

Large comfort cab with air-conditioning system standard

6 headlights for optimal lighting of the work area

Quiet engine for less noise pollution and easier communication

Intuitive operation of all excavator functions via the jog dial and display

Comprehensive application areas due to up to 5 additional control circuits

100% performance at up to 45 degree Celsius ambient temperature

Sturdy aluminum radiator improves the cooling performance and is easy to clean

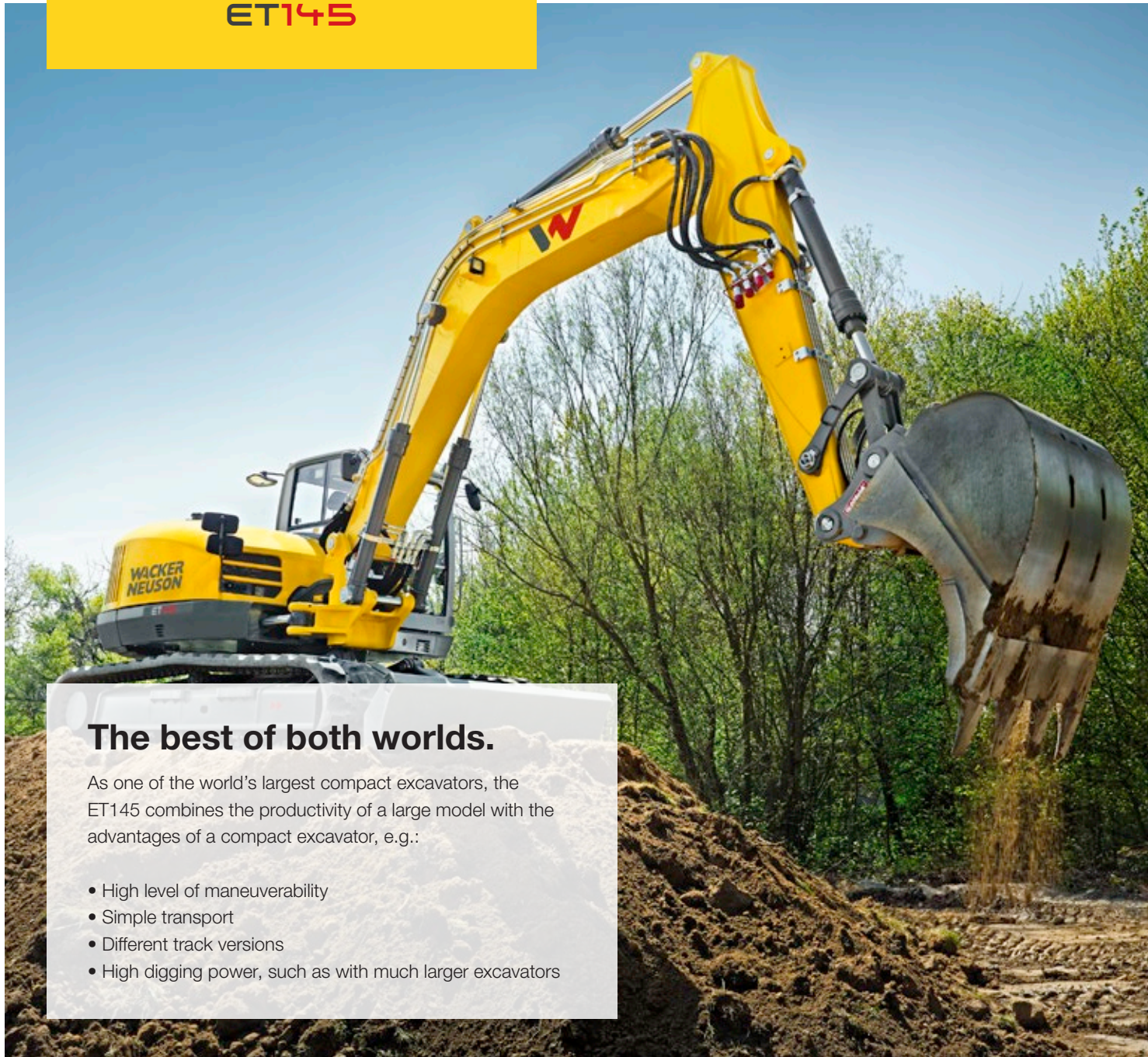
3 track versions for any application

8 large tie-downs for simple, quick and safe loading

Swivel console offers more flexibility in excavation work and saves time

Standard dozer blade for maximum lifting power and stability





The best of both worlds.

As one of the world's largest compact excavators, the ET145 combines the productivity of a large model with the advantages of a compact excavator, e.g.:

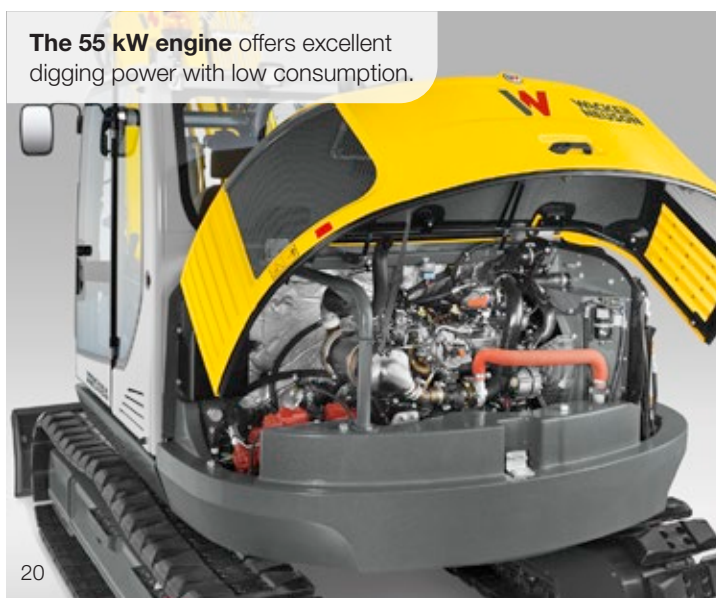
- High level of maneuverability
- Simple transport
- Different track versions
- High digging power, such as with much larger excavators

ET145 with swivel console for higher productivity.

The swivel console makes the ET145 into a real highlight in its weight class. This allows you an increased excavation area to the right and left. And because the machine needs to be moved much less, you save valuable time.

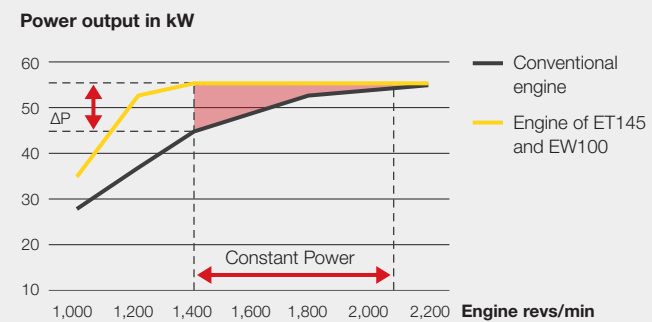
The swivel console ...

- allows you to work along walls and trenches
- facilitates work at obstacles such as pipes or flowing traffic
- improves the area of visibility, e.g. during excavation work in trench areas
- has a swiveling angle range of 70° left and 57° right



The 55 kW engine offers excellent digging power with low consumption.

Full power of the engine even at low speed.



Large ergonomic comfort cabin: Sitting position, armrests and joystick can be individually adjusted.



Good traction and maneuverability in any ground conditions with the right track.

Articulated boom and 3-point kinematics for larger excavation radius, less repositioning and faster working cycles

Variable from 0 to 30 km/h without gear selection thanks to the closed driving circuit – simple operation with just one drive pedal

Precise control in the low and high load range thanks to load-sensing hydraulics with LUDV (load-independent flow distribution)

Power and speed, perfectly combined: of the wheeled excavator EW65.

	EW65
Shipping weight (kg)	6,472–7,720
Digging depth with short and long dipper stick (mm)	3,596*–3,895*
Engine output (kW)	42

* with articulated boom



Articulated boom for bigger digging radius and less repositioning

Short hydraulic hoses thanks to the centrally positioned manifold block, therefore less power loss and longer service life of the hoses

Simple operation selection: full power (POWER) or save fuel (ECO)

Best thermal stability in its class: full performance up to 45 degrees Celsius outside temperature

Cruise control, ideal for municipal work such as mowing, milling and mulching

The best cabin comfort in its class: automatic air conditioning, seat heating, quiet engine and much more

Easy maintenance due to tiltable cabin and removable chassis covers

Environmentally sound and sustainable due to diesel particulate filter (optional)

7-inch multifunction display incl. rear-view camera as standard

Durable aluminum radiator with high thermal stability

Individual support versions: dozer blade or stabilizer, rear, front or both sides

6 large tie-downs for quick lashing down and secure transport

Move faster and more comfortably between construction sites with up to 30 km/h

Compact design for safe access, simple transport and safe refueling

Optimal illumination of the work area (optionally with durable LEDs)

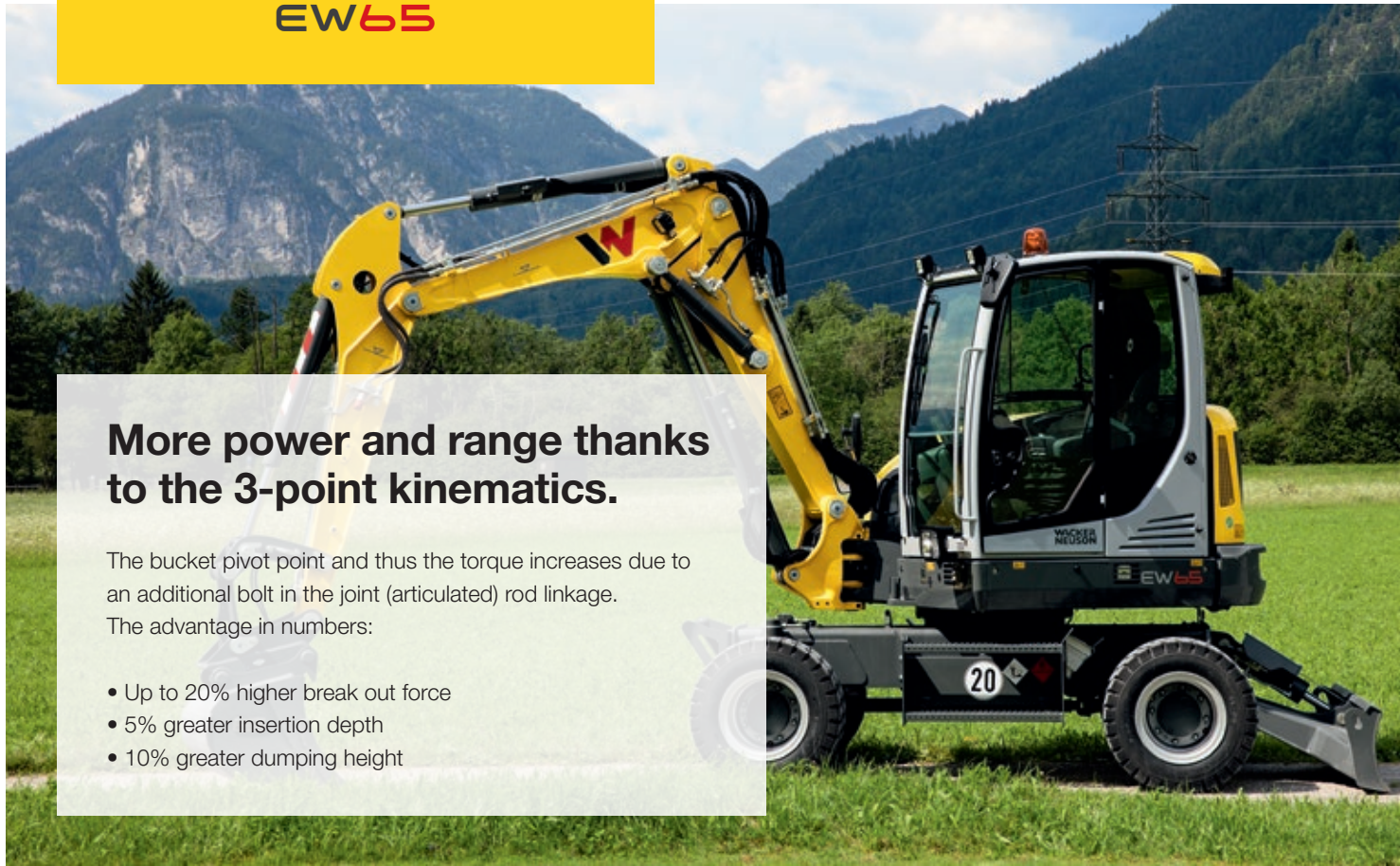
Individual equipment due to a variety of options ex work

Two operating modes to choose from: full power (POWER) or save fuel (ECO)

3-point kinematics improves the break out force, insertion depth and dumping height

Up to 5 additional control circuits available ex works, 3 of them individually adjustable

Two-piece windshield for variable ventilation and simple communication



More power and range thanks to the 3-point kinematics.

The bucket pivot point and thus the torque increases due to an additional bolt in the joint (articulated) rod linkage. The advantage in numbers:

- Up to 20% higher break out force
- 5% greater insertion depth
- 10% greater dumping height

Both powerful and sensitive:

Thanks to the load-sensing hydraulics with LUDV (load-independent flow distribution), the power can be adjusted to the situation.



Sophisticated working area: the seat, armrests and joystick positions can be adjusted individually. The operation is simple and intuitive - identical to the ET65.



Increased stability.

A stable, good footing is essential - above all during heavy excavation work or on difficult ground conditions. For support, you can use a dozer blade or support stabilizers - both in front or in the rear or in any combination.

More leeway thanks to articulated boom.

Optionally available with the EW65, the articulated boom provides you with more maneuverability and therefore greater freedom of action. So not only can you excavate deeper, but the additional joint also makes it possible to pull the bucket all the way to the travel gear or the dozer blade. Ideal when narrow spaces need to be overcome or an obstacle has to be moved out of the way.



Innovative windshield system.

The two-part front window allows for optimal ventilation in the cabin in any weather. In addition, it makes it easier to communicate with the operator. A separate removal and storage of the window is a thing of the past.



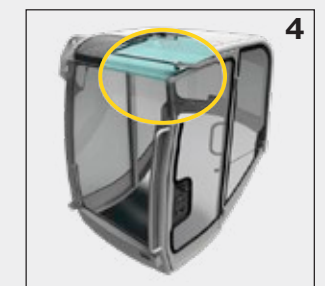
Closed windshield - two glass windows keep water and wind out.



The upper front window can be pushed under the cabin roof. The lower pane serves as splash protection.



The lower windshield slides behind the upper window, making it ideal for talking with colleagues.



If necessary, both panes are pushed below the cabin roof where they are stored safely.

Closed travel circuit: The speed can easily be variably controlled via the drive pedal – no gear change, no rolling away on a slope

3 steering modes: Front axle, all-wheel, crab steering for optimal relocation in any construction site situation

Comfortable, fatigue-free control thanks to the load-sensing hydraulic system with LUDV (load-independent flow distribution) – the joystick movements always remain the same for the operator

Productivity on wheels: of the wheeled excavator EW100.

	EW100
Shipping weight (kg)	9,241 – 10,461
Digging depth with short and long dipper stick (mm)	3,950 – 4,250
Engine output (kW)	55.4



Two operating modes to choose from: full power (POWER) or save fuel (ECO)

Optimal ventilation and communication due to flexible windshield system

Optimally positioned manifold bloc: Hydraulic hoses are shorter and wear less, the efficiency is significantly increased

Up to 5 additional control circuits available ex work for numerous application areas

Illumination of the entire work area (optionally with LEDs)

Mudguards (optional) for reduced cleaning effort



Standard articulated boom increases the digging depth

Very good thermal stability: 100% performance at up to 45 degrees ambient temperature

Cruise control, ideal for municipal work such as mowing, milling and mulching

Ergonomic cabin with individual adjustment of seat, joystick position and armrests

Intuitive operating concept: simple control via joystick, display, jog dial and keypad

Load-sensing hydraulics with LUDV (load-independent flow distribution) for precise, fatigue-free control with all loads

Sturdy aluminum radiator, easy to clean

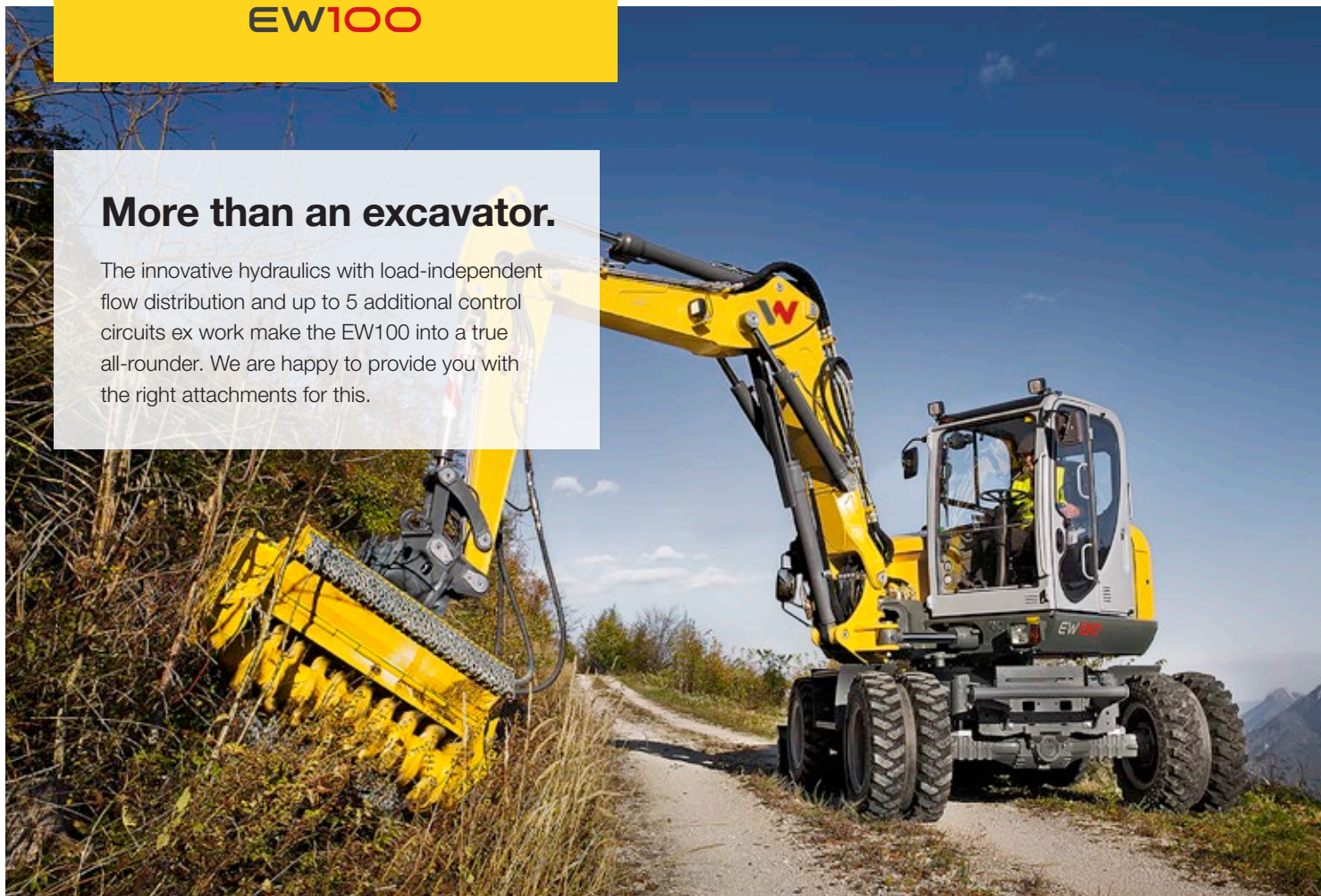
Large application radius on its own axles, standard up to 20 km/h (optionally up to 30 km/h)

Different stabilizer versions: dozer blade or stabilizer, rear, front or both sides

6 large tie-downs for quick, safe transport

More than an excavator.

The innovative hydraulics with load-independent flow distribution and up to 5 additional control circuits ex work make the EW100 into a true all-rounder. We are happy to provide you with the right attachments for this.



From 0 to 30 km/h with one drive pedal for a quick location change without transport costs.



Large tiltable cab.

Optimal access to all important service areas: The cabin can be tilted to the side by about 60° and the chassis covers can be removed in a few simple steps. Repair work is thus quickly taken care of.



High digging power and a deeper digging depth thanks to the articulated boom ensure a powerful excavation performance and quick cycle times.



Constant power engine.

Thanks to the constant power engine, the excavation performance of the EW100 remains consistently high, independent of the engine speed. That means:

- Full power even at low rpm
- Therefore less fuel consumption
- No SCR (selective catalytic reduction) required, therefore lower maintenance costs



Three steering modes.

The EW100 offers three steering modes for various applications at the construction site as well as for road use. The steering method can be easily changed using a toggle switch.



Front wheel steering for fast driving on the road.



All-wheel steering for a particularly small turning circle.



Crab steering for parallel travel, e.g. along buildings.

Configuration options

COMPACT AND WHEELED EXCAVATORS

	ET65	EZ80	ET90	ET145	EW65	EW100
CABIN						
1-door cabin (sliding window)	●	●	●	●	●	●
FOPS protective grating level 1	●	●	●	○	●	○
FOPS protective grating level 2*	○	○	○	○	○	○
Side mirror (rear-view mirror)	●	●	●	●	●	●
Radio incl. Bluetooth intercommunication station	○	○	○	●	○	○
Radio installation	●	●	●	-	●	●
Automatic air conditioning	○	○	●	●	○	○
Air-cushioned operator's seat	○	○	○	○	○	○
HYDRAULICS						
Overload warning device Advanced	○	○	○	●	●	●
Overload warning device Basic	●	●	●	-	-	-
Auxiliary hydraulics proportional control / AUX I	●	●	●	●	●	●
3rd control circuit / AUX II	○	○	○	●	○	○
Panolin HLP Synt46 (Bio)	○	○	○	○	○	○
Flat-faced coupler	○	○	○	○	○	○
Flow control valve for auxiliary hydraulic / AUX I	○	○	○	●	○	○
Flow control valve 3rd control circuit / AUX II	○	○	○	●	○	○
Preparation for power tilt / AUX III	○	○	○	○	○	○
Control circuit for grapple / AUX V	○	○	○	○	○	○
Preparation for Easy Lock / AUX IV	○	○	○	○	○	○
PAINT FINISH						
Special paint 1 RAL	○	○	○	○	○	○
Custom paintwork 1 no RAL	○	○	○	○	○	○
Special paint cab/canopy RAL	○	○	○	○	○	○
SECURITY						
Security 24 C (2,000 h)	○	○	○	○	○	○
Security 36 C (3,000 h)	○	○	○	○	○	○
Security 48 C (4,000 h)	○	○	○	○	○	○
Security 60 C (5,000 h)	○	○	○	○	○	○

● Standard ○ Option - not suitable * only with additional protective grating



EQUIPCARE

EquipCare

Until now, a service technician usually had to visit to get an overview of your machines' status. With our Telematics solution EquipCare, this is no longer necessary: with EquipCare, you can get in contact with your machine fleet from anywhere. And even better: Your devices even report to you independently, for example, to inform you of upcoming work and possible malfunctions.

COMPACT AND WHEELED EXCAVATORS

	ET65	EZ80	ET90	ET145	EW65	EW100
MISCELLANEOUS						
30 km/h	-	-	-	-	○	○
All-wheel steering	-	-	-	-	-	○
Mudguards	-	-	-	-	-	○
Rear-view camera	○	○	○	●	●	●
EquipCare 36 months (including app & manager)	○	○	○	○	○	○
Cruise control	-	-	-	-	○	○
LED rotating beacon	○	○	○	○	○	○
Front and rear work lights	○	○	○	●	○	○
Working light mounted to boom	●	●	●	●	●	●
LED lighting	○	○	○	-	○	-
Counterweight	○	○	○	-	-	-
Diesel filling pump	○	○	○	●	○	●
Automatic RPM speed control	●	●	●	●	●	●
Drive signal	○	○	○	-	○	○
Long dipper stick	○	○	○	○	○	○
Front or rear dozer blade	-	-	-	-	○	○
Front or rear stabilizer support	-	-	-	-	○	○
Articulated boom	○	-	○	-	○	●
Hose-rupture valve for bucket cylinder	-	-	-	-	-	○
Road traffic regulation accessories	-	-	-	-	○	○
Steering logic switch-over	-	-	-	-	-	○
KAT immobilizer system	○	○	○	○	○	○
Tool box	-	-	-	-	-	○
ISO - SAE switch-over	○	○	○	○	○	○
Rubber track*	●	●	●	○	-	-
Hybrid track*	○	○	○	○	-	-
Steel track*	○	○	○	●	-	-
Dual tires	-	-	-	-	○	●
Balloon tires	-	-	-	-	●	○
ASSEMBLED ATTACHMENTS						
Easy Lock	○	○	○	-	○	○
Easy Lock + Powertilt	○	○	○	-	○	○
Easy Lock + Powertilt + Load hook	○	○	○	-	○	○
Mechanical quick hitch system	○	○	○	○	○	○
OilQuick + load hook	-	-	-	○	-	-
OilQuick + Powertilt + load hook	-	-	-	○	-	-
Hyd. Lehnhoff quick hitch system + load hook	○	○	-	○	○	○
Hyd. Lehnhoff quick hitch system + Powertilt + load hook	○	○	-	○	○	○

* different widths possible depending on the model

Dimensions

		ET65	EZ80	ET90	ET145	EW65	EW100	
DIMENSIONS		UNIT						
A	Height	mm	2,478	2,562	2,562	2,790 2,825 ⁽⁴⁾	2,775	2,980
B	Width of travel gear, retracted (track / tires)	mm	1,950	2,250	2,250	2,490	1,832 2,088 ⁽¹⁾	2,450
C	Transport length (short dipper stick)	mm	6,128 6,100 ⁽³⁾	6,939	7,117 6,468 ⁽³⁾	7,720	6,114 6,220 ⁽³⁾	7,255 6,656 ⁽³⁾
C	Transport length (long dipper stick)	mm	6,135 6,210 ⁽³⁾	6,944	7,139 6,690 ⁽³⁾	7,790	6,137 6,349 ⁽³⁾	7,315 6,886 ⁽³⁾
D	Max. digging depth (short dipper stick)	mm	3,757 3,879 ⁽³⁾	3,919	4,325 4,379 ⁽³⁾	5,000	3,531 3,596 ⁽³⁾	3,998 3,950 ⁽³⁾
D	Max. digging depth (long dipper stick)	mm	4,003 4,184 ⁽³⁾	4,169	4,625 4,679 ⁽³⁾	5,500	3,831 3,895 ⁽³⁾	4,298 4,250 ⁽³⁾
E	Max. vertical insertion depth (short dipper stick)	mm	2,431 2,811 ⁽³⁾	1,915	3,192 3,198 ⁽³⁾	3,100	2,088 2,465 ⁽³⁾	3,350 3,450 ⁽³⁾
E	Max. vertical insertion depth (long dipper stick)	mm	2,704 3,095 ⁽³⁾	2,124	3,474 3,456 ⁽³⁾	3,600	2,361 2,737 ⁽³⁾	3,650 3,750 ⁽³⁾
F	Max. insertion height (short dipper stick)	mm	5,759 6,539 ⁽³⁾	6,620	7,322 7,931 ⁽³⁾	8,300 ⁽⁵⁾	6,068 6,834 ⁽³⁾	7,295 8,090 ⁽³⁾
F	Max. insertion height (long dipper stick)	mm	5,940 6,774 ⁽³⁾	6,782	7,529 8,196 ⁽³⁾	8,600 ⁽⁵⁾	6,250 7,067 ⁽³⁾	7,485 8,355 ⁽³⁾
G	Max. dumping height (short dipper stick)	mm	3,993 4,684 ⁽³⁾	4,587	5,066 5,674 ⁽³⁾	5,700 5,659 ⁽⁴⁾	4,207 4,961 ⁽³⁾	5,160 5,935 ⁽³⁾
G	Max. dumping height (long dipper stick)	mm	4,714 4,916 ⁽³⁾	4,749	5,272 5,940 ⁽³⁾	6,000	4,389 5,195 ⁽³⁾	5,350 6,205 ⁽³⁾
H	Max. digging radius (short dipper stick)	mm	6,224 6,601 ⁽³⁾	6,955	7,331 7,596 ⁽³⁾	8,300	6,220 6,590 ⁽³⁾	7,540 7,815 ⁽³⁾
H	Max. digging radius (long dipper stick)	mm	6,508 6,890 ⁽³⁾	7,190	7,620 7,889 ⁽³⁾	8,800	6,504 6,877 ⁽³⁾	7,825 8,105 ⁽³⁾
I	Max. reach at ground level (short dipper stick)	mm	6,100 6,487 ⁽³⁾	6,795	7,179 7,463 ⁽³⁾	8,100	6,024 6,406 ⁽³⁾	7,320 7,605 ⁽³⁾
I	Max. reach at ground level (long dipper stick)	mm	6,391 6,779 ⁽³⁾	7,036	7,474 7,751 ⁽³⁾	8,600	6,318 6,706 ⁽³⁾	7,615 7,905 ⁽³⁾
J	Min. tail swing radius	mm	1,363	1,228	1,583	2,015	1,459	1,575
K	Max. boom offset to center of bucket (right/left)	mm	766/ 492	705/ 683	705/ 683	850/ 640	766/ 492	1,023/ 840
L	Max. stacking height dozer blade above subgrade (short/long)	mm	403	474	479	492/ 532 ⁽⁴⁾	395	504
M	Max. scraping depth of dozer blade under subgrade (short/long)	mm	427	523	518	531/ 493 ⁽⁴⁾	301	132
N	Total track length	mm	2,516	2,826	2,826	3,605	2,887	3,193
O	Max. swing angle of arm system to the right	°	63	63	63	57	63	63
P	Max. swing angle of arm system to the left	°	67	67	67	70	67	67
Q	Track/tire width	mm	400	450	450	500	300 457 ⁽¹⁾	514 ⁽¹⁾ 530 ⁽²⁾
R	Boom swing radius, center	mm	2,453 3,159 ⁽³⁾	2,869	2,503 2,840 ⁽³⁾	2,814	2,465 2,605 ⁽³⁾	2,953 3,190 ⁽³⁾

⁽¹⁾ Dual tires ⁽²⁾ Balloon tires ⁽³⁾ with articulated boom ⁽⁴⁾ with hybrid track ⁽⁵⁾ with steel track

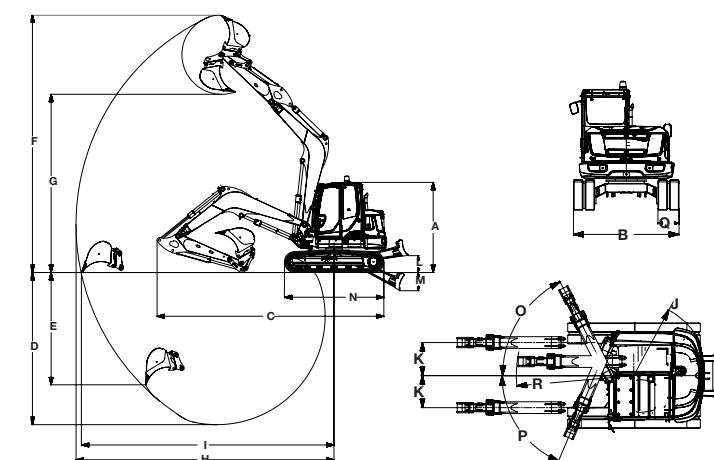
Technical data

		ET65	EZ80	ET90	ET145	EW65	EW100
GENERAL		UNIT					
Shipping weight*	kg	5,806–6,682	7,588–8,877	8,348–9,625	14,917–15,701	6,472–7,720	9,241–10,461
Operating weight	kg	6,078–6,954	7,918–9,208	8,710–9,988	15,551–16,335	6,755–8,003	9,685–11,036
Max. ripping force**	kN according to ISO 6015	30.8	43.7	46	69	30.8	47
Max. break out force	kN according to ISO 6015	50.7	68	73.8	91	50.7	54.1
ENGINE		UNIT					
Manufacturer	–	Perkins	Perkins	Perkins	Perkins	Perkins	Perkins
Model	–	404J-E22T	404J-E22T	904J-E28T	854F-E34TA	404J-E22T	904J-E36TA
Design system	–	Liquid-cooled, 4-cylinder Yanmar turbo diesel engine					
Displacement	cm ³	2,216	2,216	2,799	3,400	2,216	3,621
Engine output	according to ISO kW/hp	42/57.1	42/57.1	55.4/75.3	55.1/74.9	42/57.1	55.4/75.3
Fuel tank volume	l	85	85	85	205	85	85
Emission standard	–	Stage V		Stage IIIb		Stage V	Stage V
HYDRAULICS		UNIT					
Hydraulic system / pumps	–	LUDV with variable displacement pump			Negative control with double variable displacement pump and 2 gear pumps	LUDV with variable displacement pump, separate travel pump	
Max. flow rate	l/min	144	160	175	2x118+20+36	158.4+99	180
Operating pressure for work and drive hydraulics	bar	240	300	300	340	240/420	290/440
Operating pressure for swing gear	bar	215	240	240	320	215	–
Auxiliary hydraulics, max. discharge volume	l/min	107	113	113	121	107	117
TRAVEL GEAR		UNIT					
Ground clearance	mm	284	357	370	480	237	340
Max. travel speed	km/h	5.2	4.4	5	5	Up to 30	Up to 30
Ground pressure of basic machine	kg/cm ²	0.35	0.36	0.40	0.50	–	–
NOISE EMISSIONS		UNIT					
Sound power level (L _{wa})	dBA according to 2000/14/EC	97	97	99	99	97	96
Sound pressure level (L _{pa})	dBA according to ISO 6394	77	79	79	75	77	76

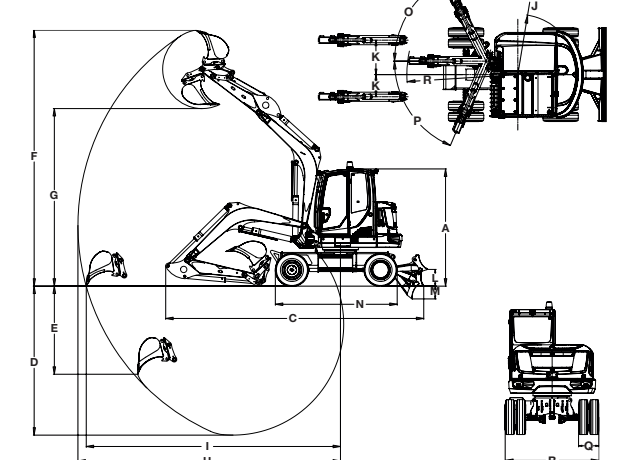
* Basic machine + 10% fuel tank capacity ** short dipper stick

All information relates to the base machine. Subject to changes.

Tracked excavators



Wheeled excavators



Lift capacity tables

ET65

A	MAX																							
	5.0 m						4.0 m						3.0 m						2.0 m					
	C		D		C		D		C		D		C		D		C		D		C		D	
B	Blade up		Blade down		D		Blade up		Blade down		D		Blade up		Blade down		D		Blade up		Blade down		D	
	from	up to	from	up to	from	up to	from	up to	from	up to	from	up to	from	up to	from	up to	from	up to	from	up to	from	up to	from	up to
4.0 m	817	1,291*	1,099	1,291*	663	1,144	840	1,011	1,095	1,095*	683	833	1,060	1,244*	1,060	1,244*	936	1,244*	-	-	-	-	-	-
3.0 m	672	1,080*	1,150	1,280*	535	902	794	1,043	1,086	1,149*	669	871	1,115	1,308*	1,115	1,308	1,002	1,252	1,580	1,580*	1,580	1,580*	-	-
2.0 m	593	955*	1,121	1,301*	471	797	753	1,021	1,157	1,313*	639	850	1,145	1,446	1,341	1,474	923	1,208	1,621	2,090	1,621	2,090*	1,431	1,852
1.0 m	562	915*	1,105	1,339*	443	758	722	993	1,238	1,401*	597	822	1,056	1,383	1,600	1,738	838	1,138	1,602	2,140	2,350	2,549*	1,241	1,723
0 m	569	938*	1,009	1,387*	446	776	716	972	1,271	1,441*	561	804	991	1,331	1,703	1,908	776	1,090	1,515	2,028	2,539	2,856*	1,160	1,622
-1.0 m	619	1,048*	984	1,437*	486	864	697	952	1,131	1,360*	545	784	959	1,314	1,605	1,894	746	1,074	1,486	2,010	2,273	2,812*	1,132	1,605
-2.0 m	749	1,356*	911	1,456*	585	1,112	-	-	-	-	-	-	969	1,308	1,227	1,639	755	1,068	1,510	2,041	1,744	2,461*	1,155	1,633

All table values are given in kg in a horizontal position on a solid surface and without bucket.

EZ80

A	MAX																							
	5.0 m						4.0 m						3.0 m						2.0 m					
	C		D		C		D		C		D		C		D		C		D		C		D	
B	Blade up		Blade down		D		Blade up		Blade down		D		Blade up		Blade down		D		Blade up		Blade down		D	
	from	up to	from	up to	from	up to	from	up to	from	up to	from	up to	from	up to	from	up to	from	up to	from	up to	from	up to	from	up to
4.0 m	905	1,173	1,949	2,094*	987	1,287	1,048	1,235	1,900	2,074*	1,143	1,368	1,588	1,806	2,043	2,043*	1,713	1,999	-	-	-	-	-	-
3.0 m	766	991	1,946	2,079*	834	1,086	1,030	1,217	1,996	2,131*	1,124	1,341	1,496	1,744	2,140	2,340*	1,648	1,950	-	-	-	-	-	-
2.0 m	729	904	2,069	2,098*	797	991	983	1,170	2,224	2,336*	1,076	1,288	1,392	1,640	2,677	2,859*	1,538	1,837	2,155	2,574	3,752	4,164*	2,441	2,934
1.0 m	668	875	2,008	2,134*	731	961	932	1,119	2,467	2,546*	1,017	1,234	1,288	1,536	3,217	3,346*	1,429	1,717	1,929	2,317	5,041	5,275*	2,196	2,656
0 m	682	899	2,054	2,176*	747	989	894	1,081	2,607	2,637*	970	1,195	1,211	1,470	3,513	3,561*	1,349	1,645	1,832	2,216	5,417	5,417*	2,094	2,545
-1.0 m	746	993	2,094	2,206*	819	1,096	882	1,069	2,530	2,470*	949	1,183	1,178	1,448	3,415	3,462*	1,314	1,621	1,807	2,208	4,975	5,131*	2,066	2,536
-2.0 m	909	1,236	2,092	2,165*	1,002	1,372	-	-	-	-	-	-	1,188	1,469	2,780	2,979*	1,324	1,643	1,834	2,246	4,000	4,311*	2,095	2,577

ET90

A	MAX																							
	6.0 m						5.0 m						4.0 m						3.0 m					
	C		D		C		D		C		D		C		D		C		D		C		D	
B	Blade up		Blade down		D		Blade up		Blade down		D		Blade up		Blade down		D		Blade up		Blade down		D	
	from	up to	from	up to	from	up to	from	up to	from	up to	from	up to	from	up to	from	up to	from	up to	from	up to	from	up to	from	up to
4.0 m	1,026	1,568	1,624	1,847*	960	1,383	1,083	1,265	1,621	1,621*	1,013	1,173	1,511	1,857*	1,702	1,857*	1,409	1,649	1,769	2,016*	1,769	2,016*	1,769	2,016*
3.0 m	903	1,369	1,567	1,818*	845	1,207	1,069	1,251	1,633	1,715*	999	1,159	1,459	1,826*	1,823	1,964*	1,358	1,606	2,073	2,294*	2,073	2,294*	1,942	2,252
2.0 m	839	1,272	1,528	1,814*	784	1,119	1,030	1,212	1,695	1,753*	962	1,124	1,383	1,759	1,995	2,145*	1,285	1,542	1,948	2,470	2,515	2,681*	1,790	2,146
1.0 m	816	1,241	1,493	1,821*	763	1,089	988	1,170	1,747	1,778*	922	1,089	1,309	1,693	2,145	2,309*	1,213	1,479	1,808	2,337	2,831	3,032*	1,657	2,019
0 m	833	1,272	1,452	1,828*	778	1,114	956	1,138	1,733	1,718*	890	1,066	1,258	1,647	2,200	2,369*	1,154	1,435	1,720	2,254	2,937	3,155*	1,572	1,941
-1.0 m	892	1,382	1,377	1,820*	832	1,209	946	1,128	1,574	1,574*	881	1,041	1,239	1,628	2,104	2,251*	1,126	1,417	1,680	2,227	2,736	3,057*	1,534	1,916
-2.0 m	1,040	1,640	1,257	1,756*	968	1,430	-	-	-	-	-	-	1,254	1,649	1,778	1,778*	1,134	1,438	1,689	2,241	2,252	2,708*	1,543	1,929

ET145

A	MAX																							
	6.0 m						5.0 m						4.0 m						3.0 m					
	C		D		C		D		C		D		C		D		C		D		C		D	
B	Blade up		Blade down		D		Blade up		Blade down		D		Blade up		Blade down		D		Blade up		Blade down		D	
	from	up to	from	up to	from	up to	from	up to	from	up to	from	up to	from	up to	from	up to	from	up to	from	up to	from	up to	from	up to
6.0 m	2,368	2,878	2,879	3,271*	2,544	3,094	-	-	-	-	-	-	2,569	2,946	2,569	3,234*	2,569	3,167*	-	-	-	-	-	-
4.0 m	1,677	1,909	2,966	3,301*	1,807	2,055	2,145	2,200	2,874	3,263*	2,307	2,365	2,862	2,893	2,866	3,349*	2,866	3,113*	3,572	3,572*	3,572	3,572*	3,572	3,572*
2.0 m	1,462	1,664	3,485	3,152*	1,580	1,775	2,015	2,050	3,545	3,828*	2,175	2,213	2,605	2,671	4,142	4,543*	2,818	2,887	3,528	3,660	5,370	6,064*	3,836	3,977
0 m	1,471	1,668	3,413	3,758*	1,594	1,805	1,884	1,927	4,182	4,303*	2,043	2,087	2,408	2,448	5,234	5,400*	2,617	2,659	3,247	3,293	7,159	7,333*	3,550	3,598
-2.0 m	1,772	2,093	3,752	4,094*	1,921	2,269	1,858	1,883	4,029	4,029*	2,016	2,044	2,355	2,443	4,992	5,217*	2,563	2,654	3,201	3,308	6,629	6,958*	3,502	3,614
-4.0 m	3,520	3,562	4,038	4,038*	3,837	3,884	-	-	-	-	-	-	-	-	-	-	-	-	-	-	-	-	-	-

EW65

A	MAX																							
	5.0 m						4.0 m						3.0 m						2.0 m					
	C		D		C		D		C		D		C		D		C		D		C		D	
B	Blade up		Blade down		D		Blade up		Blade down		D		Blade up		Blade down		D		Blade up		Blade down		D	
	from	up to	from	up to	from	up to	from	up to	from	up to	from	up to	from	up to	from	up to	from	up to	from	up to	from	up to	from	up to
4.0 m	1,019	1,227*	1,083	1,227*	726	1,207	1,107	1,079*	1,079	1,079*	806	883	1,125	1,240*	1,125	1,240*	-	-	-	-	-	-	-	-
3.0 m	869	1,229*	1,047	1,229*	614	1,002	1,105	1,226*	1,105	1,226*	782	1,009	1,255	1,360*	1,255	1,360*	1,132	1,252*	1,523	1,721*	1,523*	1,721*	1,523	1,721*
2.0 m	798	1,255*	1,031	1,255*	559	914	1,186	1,281*	1,186	1,281*	746	984	1,466	1,554*	1,466	1,554*	1,048	1,365*	2,010	2,078*	2,010*	2,078*	1,575	2,010*
1.0 m	778	1,286	1,020	1,295*	541	893	1,259	1,362*	1,259	1,362*	704	959	1,650	1,728*	1,650	1,728*	970	1,305	2,207	2,576*	2,496*	2,576*	1,420	2,576*
0 m	806	1,343*	1,006	1,343*	557	935	1,230	1,361*	1,259	1,361*	674	944	1,606	1,841*	1,708	1,841*	917	1,268	2,138	2,743*	2,488*	2,743*	1,360	2,743*
-1.0 m	900	1,387*	971	1,387*	621	1,074	974	1,128*	1,128	1,128*	667	839	1,586	1,731*	1,587	1,778*	899	1,262	2,126	2,550*	2,148*	2,632*	1,350	2,632*
-2.0 m	869	1,375*	869	1,375*	779	1,375*	-	-	-	-	-	-	1,003	1,207*	1,003	1,374*	922	1,269	1,506	1,904*	1,506*	2,163*	1,385	2,163*

EW100

A	MAX																							
	6.0 m						5.0 m						4.0 m						3.0 m					
	C		D		C		D		C		D		C		D		C		D		C		D	
B	Blade up		Blade down		D																			

Your everyday work day is full of challenges. We have the right solutions and help you to stay ahead of the competition.

We offer you everything you need for this purpose: **Wacker Neuson – all it takes!**

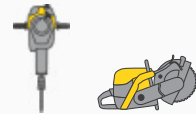
Products



Concrete technology



Compaction



Demolition technology



Excavators



Wheel loaders



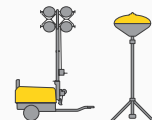
Telehandlers



Dumpers



Generators



Lighting



Pumps



Used equipment

www.wackerneuson.com

Services



Financial solutions

Uncomplicated, transparent and individual financing options for you.



Repair & maintenance

Excellent and fast maintenance. Repairs with original spare parts.



Academy

We expand your know-how: practice-oriented and within an ideal learning environment.



EquipCare

Everything about the machines at a glance, via app or PC – EquipCare.



Rental

Protect your liquidity and rent top-maintained construction equipment as needed.



Concrete specialists

Our specialists advise you in all project stages.



E-Store

Buy original spare parts online conveniently – for all Wacker Neuson product groups.



Spare parts

Every minute counts:

Within the shortest period of time, we deliver over 150,000 genuine Wacker Neuson spare parts to your construction site.



WN.EMEA.10291.V04.EN-US

03/2021 EN



Facebook
wackerneuson



Instagram
@wackerneuson



Youtube
Wacker Neuson



LinkedIn
Wacker Neuson Group