

Wheel loaders



**WACKER
NEUSON**
all it takes!



These reasons speak for wheel loaders from Wacker Neuson.

1. Full power – precisely for your requirements.

Optimally balanced efficiency output characterizes every wheel loader from Wacker Neuson. In this way, you always get the power that you need in all classes – combined with maximum efficiency.

2. Full flexibility – for varied application all year round.

You can outfit a wheel loader from Wacker Neuson with different attachments time and time again for new jobs: from the traditional digging bucket to the pallet fork to the numerous special attachments for the construction industry, recycling, municipalities and gardening and landscaping. In this way you create exactly the all-rounder that you need.

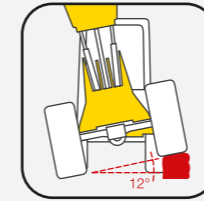
3. Full economic efficiency – and in every respect.

High quality materials for a long service life. Economical in consumption. Good maneuverability for quick loading cycles. Maintenance that is done in no time. We at Wacker Neuson always consider economic efficiency as an overall concept.

Wacker Neuson – all it takes!

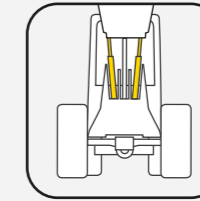
We offer products and services rendered that meet your high requirements and diverse applications. Wacker Neuson stands for reliability. This of course also applies to our large range of wheel loaders. We do our best every day to ensure your success. And we do this full of passion for our jobs.

Wheel loader expertise down to the last detail.



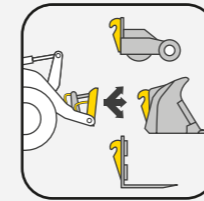
Maximum traction

Thanks to the articulated pendulum joint with 12° oscillating angle, all four wheels retain wheel grip, even in uneven ground conditions - and the operator maintains optimal control.



Two powerful lift cylinders

For even more stability of the loader system, all wheel loaders from Wacker Neuson are equipped with two lift cylinders. In this way, the hydraulic power is optimally distributed to the load arm.



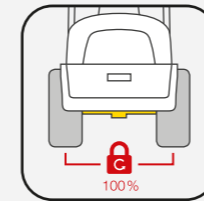
Your wheel loader as an attachment carrier

Use the wheel loaders from Wacker Neuson as you need them – the matching hydraulic performance and control circuits for additional functions make this possible.



High-quality powder coating

In comparison to conventional wet painting, powder coating greatly extends the service life of the machine. It is also environmentally friendly.



Connectable 100% differential lock
Good traction even on difficult ground surfaces is made possible for you by the connectable 100% differential lock.

All wheel loaders in an overview.



WL20e

Bucket capacity: 0.19 m³
> Page 04



WL20

0.19 m³



WL25

0.30 m³



WL28

0.42 m³



WL32

0.47 m³



WL38

0.64 m³



WL52

0.85 m³



WL34

Bucket capacity: 0.50 m³



WL44

0.80 m³

> Page 22



WL54

0.90 m³



WL60

1.00 m³

> Page 28



WL70

1.10 m³



WL95

1.55 m³

> Page 34



WL110

1.80 m³

The purely electrically-operated wheel loader works with low-noise operation and is 100% emission-free, which protects both the operator and the working environment

The AGM battery with on-board battery charger can be charged at any 230 V outlet. Intermediate charges are possible at any time

Easy to handle, low maintenance effort and therefore low service costs

Electric, practical, innovative: the WL20e.

	WL20e
Bucket capacity (m ³)	0.19
Operating weight (kg)	2,350
Motor output (kW)	6.5' / 9"
Tipping load of bucket, loading frame horizontal – pivoted machine (kg)	1,251

* Motor drive system ** Motor work hydraulics



Reduced service costs
compared to the conventional diesel drive

The low noise level
protects the operator and the working environment

The performance of the WL20e
corresponds to the diesel-powered wheel loader WL20 and the tipping load is even higher

Flexible intermediate charges
possible at any time, no memory effect

Hill-hold function – when at a standstill on a slope, the electric motor holds the machine in place

Two electric motors, one for the drive system and one for the work hydraulics, allow for power to be accessed when needed and minimize consumption

“On-board” battery charger – easily charge via a 230 V outlet at any time

Leak-proof AGM battery technology (absorbent glass mat) makes handling the machine extremely safe

zero emission wheel loader with maintenance-free battery

Frequency converter: converts direct current of the battery into 3-phase AC for both electric motors

Main relay: relays the electrical connection between the battery and consumers

Battery: provides the necessary energy for both electric motors

On-board battery charger: allows for flexible charging at any 230 V outlet

Control unit: controls the drive system and the work hydraulics



Innovative technology, time-tested and proven in application.

Wacker Neuson presses ahead innovations in the field of electric drives in construction machines. With the WL20e, we offer you an emission-free solution that has already been time-tested and proven for several years and in many different operations –and that we continuously develop further. So that you always benefit from the latest technology.



Up to 5 hours of running time are possible – depending on the type of application – with a fully charged battery.

Easy charging via any 230 V outlet.



1. Open the rear lid and take out the charging cable.



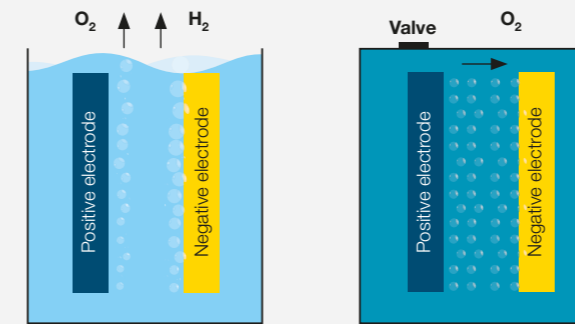
2. Insert into 230 V outlet.



3. LED lights on the on-board battery charger indicate the current charge situation of battery.

Maintenance-free and leak-proof: aGM (Absorbent Glass Mat).

- Closed design: so leakage is not possible. In addition, the battery is maintenance-free and no oxyhydrogen gas is formed
- Low temperature sensitivity (outside temperature)
- On-board battery charger, intermediate charges are possible on the 230 volt outlet out at any time



Open system, Lead-acid battery

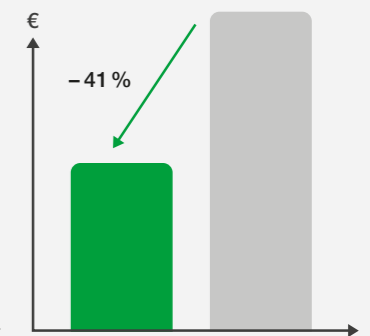
Closed system, lead-acid battery with fleece

Operating costs* for WL20e:

The 25% higher investment costs are amortized with an average machine service life after about 2,800 operating hours.

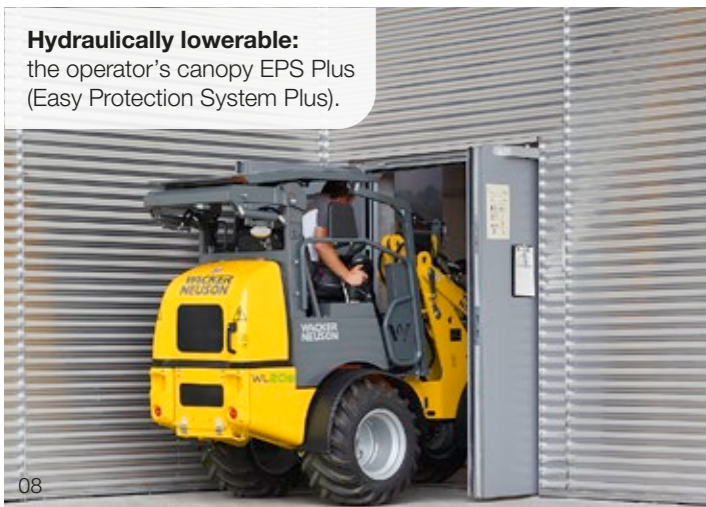
zero emission

Operating costs* over the machine's service life



* Taken into consideration are energy and service costs as well as a battery replacement.

Hydraulically lowerable: the operator's canopy EPS Plus (Easy Protection System Plus).



Always in view: the charge situation of battery is shown on the display.



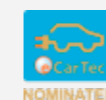
Award winning internationally:



Gold in the innovation competition of the demopark + demogolf trade fair 2015 (Eisenach, Germany)



European Rental Award 2016, short list in the category of "Rental Product of the Year" (Stockholm, Sweden)



eCarTec Awards 2015, finalist in the category "Electric Vehicles" (Munich, Germany)



Plantworx Award 2017, Awarded "Highly Recommended" in the category "Environmental Innovation" (Leicester, UK)



Innovation award "Innovation Compact Equipment" DLR Convention 2018 (Bordeaux, France)



The right operator's cab for every application area: operator's canopy, EPS (fold-down operator's canopy), EPS Plus (lowerable operator's canopy) or cabin

Compact dimensions and low weight allow for transport on a car trailer

Low front carriage for the WL25 and WL28 for the best possible view of the attachment and work area

Compact powerhouses: the wheel loaders WL20, WL25 and WL28.

	WL20	WL25	WL28
Bucket capacity (m ³)	0.19	0.30	0.42
Operating weight (kg)	2,000–2,150	2,380–2,550	3,050–3,120
Motor output (kW)	18.4 / 23.4	18.4	35.7
Tipping load of bucket, loading frame horizontal – pivoted machine (kg)	977 / 1,206*	1,144–1,703*	1,669 / 2,011*

* Values of optional outfitting

Good maneuvering thanks to the small turning radius

Compact dimensions in width, height and length, ideal for confined spaces

Selectable operator's cab: operator's canopy, EPS (fold-down operator's canopy), EPS Plus (lowerable operator's canopy) or cabin

Ideal for heavy loads: wL28 easily moves a pallet of paving stones

Powerful hydraulics and tailored motor output for the best performance



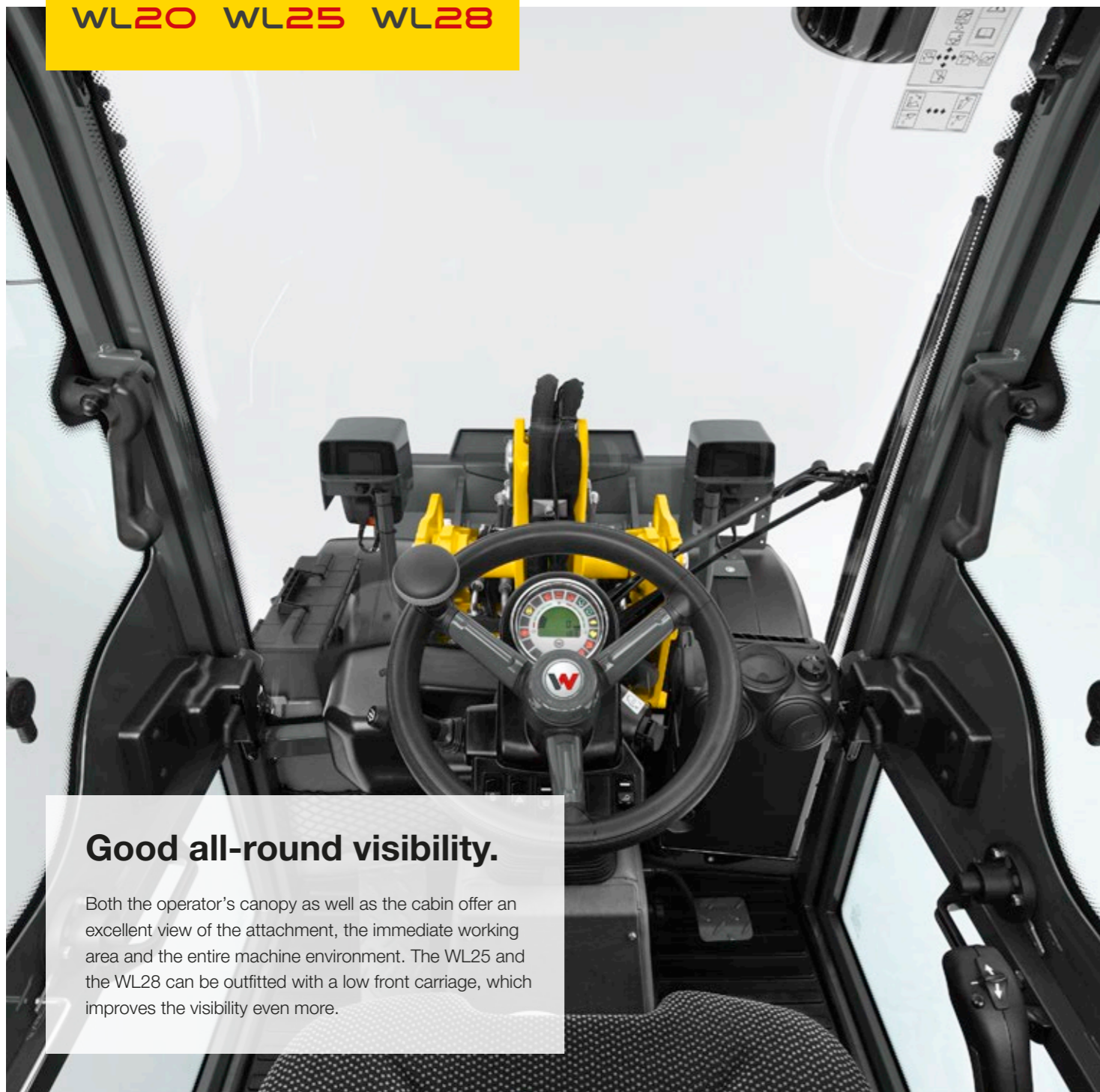
Optionally up to 30 km/h for quickly relocating the machine

Infinitely adjustable mudguards make it possible to use different tires

Easy transport on a car trailer thanks to the low weight

Flexible and universal in application due to the optimally tailored kinematics and very good weight distribution

Low front carriage for extra tipping load, stability and an overview of the working area



Good all-round visibility.

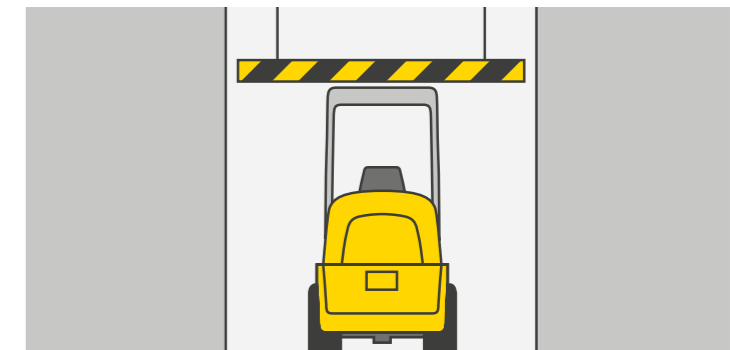
Both the operator's canopy as well as the cabin offer an excellent view of the attachment, the immediate working area and the entire machine environment. The WL25 and the WL28 can be outfitted with a low front carriage, which improves the visibility even more.

Optimal service accesses.

All three wheel loaders are outfitted with a tiltable operator's stand or a tiltable cabin. This allows easy access to the engine, hydraulic system, and electronics. This facilitates the inspection and maintenance of the machine greatly. The engine hood can be opened widely, thereby allowing for optimal access.



Folded down quickly: the operator's canopy EPS (Easy Protection System).



Whether driving into a garage or building entrance: low passage heights are not an obstacle.

Year-round application – e.g. with a snowplow in the winter.



Heavy loads are easy for the WL28: it even moves a pallet of paving stones easily.



This saves you time and transport costs: thanks to the compact dimensions and low weight, the machines can be transported easily by car trailer.



Compact dimensions – ideal when it comes down to centimeters.





Powerful hydraulics with many options (e.g. Highflow) for a wide range of attachments and applications

Despite the compact dimensions: powerful lift and ripping forces with a powerful and well-matched motor output

Comfortably equipped cabin with optimal ergonomics and a clear overview

Multi-talents with comfort: the wheel loaders WL32, WL38 and WL52.

	WL32	WL38	WL52
Bucket capacity (m³)	0.47	0.64	0.85
Operating weight (kg)	3,400	4,200–4,300	5,100
Motor output (kW)	36.3/44.7*	36.3/55.4*	55.4
Tipping load of bucket, loading frame horizontal – pivoted machine (kg)	1,692/1,898*	2,494/3,113*	3,416

* Values of optional outfitting

Hydraulic joystick pilot control for fatigue-free working

Large lift height and high ripping forces due to the long load arm design with PZ kinematics (WL32, WL38), WL52 with powerful Z-kinematics and low front carriage for extra tipping load and a clear overview of the working area

Tilt-down operator's cab allows for easy access to the engine, hydraulics and electrics – which saves time and money

Comfortable cabin outfitting for fatigue-free working and increased productivity

Good all-round visibility from operator's seat

A variety of hydraulic options allows for the application of different attachments

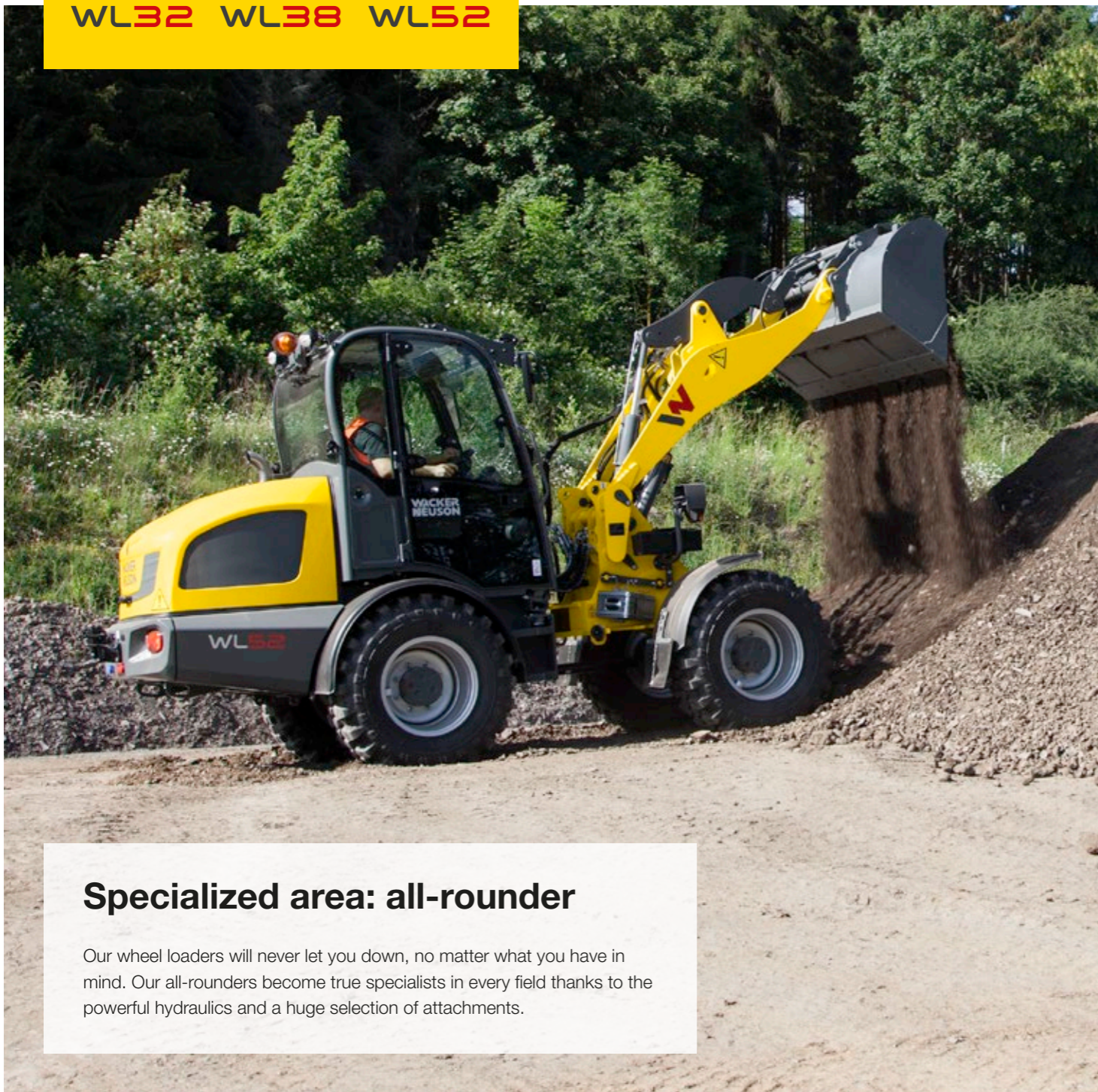


A low turning radius allows for good maneuvering

Ideal for foot paths: WL32 already available from 1.2 m width

Powerful hydraulic system and optimally matched motor output

Very high ripping forces due to the large-sized tipping cylinders



Specialized area: all-rounder

Our wheel loaders will never let you down, no matter what you have in mind. Our all-rounders become true specialists in every field thanks to the powerful hydraulics and a huge selection of attachments.

Comfortably equipped cabin.

Comfort and a high degree of ergonomics in the cabin allow the operator to work for hours fatigue-free and productively. For example, the spacious cabins are ideally damped against vibrations and the comfort seat is additionally cushioned. The

steering wheel, seat and operator's controls can be individually adapted to the operator's size. The machine and additional functions are controlled via a joystick of the latest generation. In this way, the operator always has everything in hand.



Comfortable work: adjustable steering wheel and cushioned comfort seat (optional).

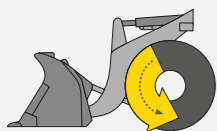


Operator-friendly and multifunctional: the innovative joystick with ergonomically arranged, illuminated touch controls.

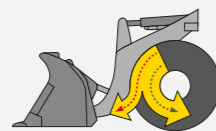


Adjustable joystick console on the operator's seat that swings along.

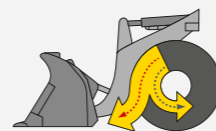
Inch brake pedal: motor output where it is needed.



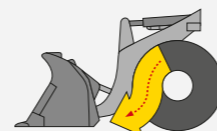
No pressure on inch brake pedal: full power for the drive system



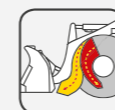
Slightly depressed brake-inch pedal: speed is reduced, more power to the work hydraulics.



Further depressed brake-inch pedal: the speed is reduced further, even more power to the work hydraulics.



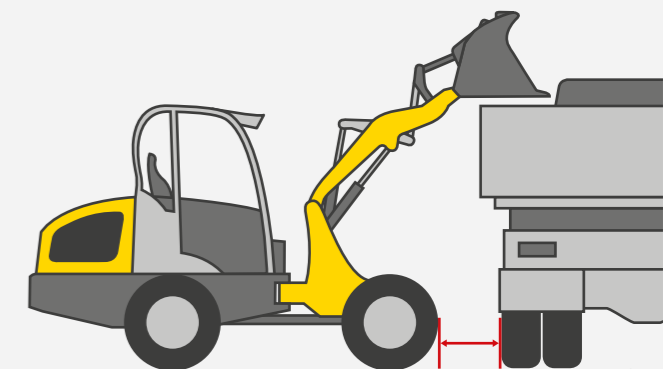
Fully depressed brake-inch pedal: the wheel loader stands still, full power to the work hydraulics.

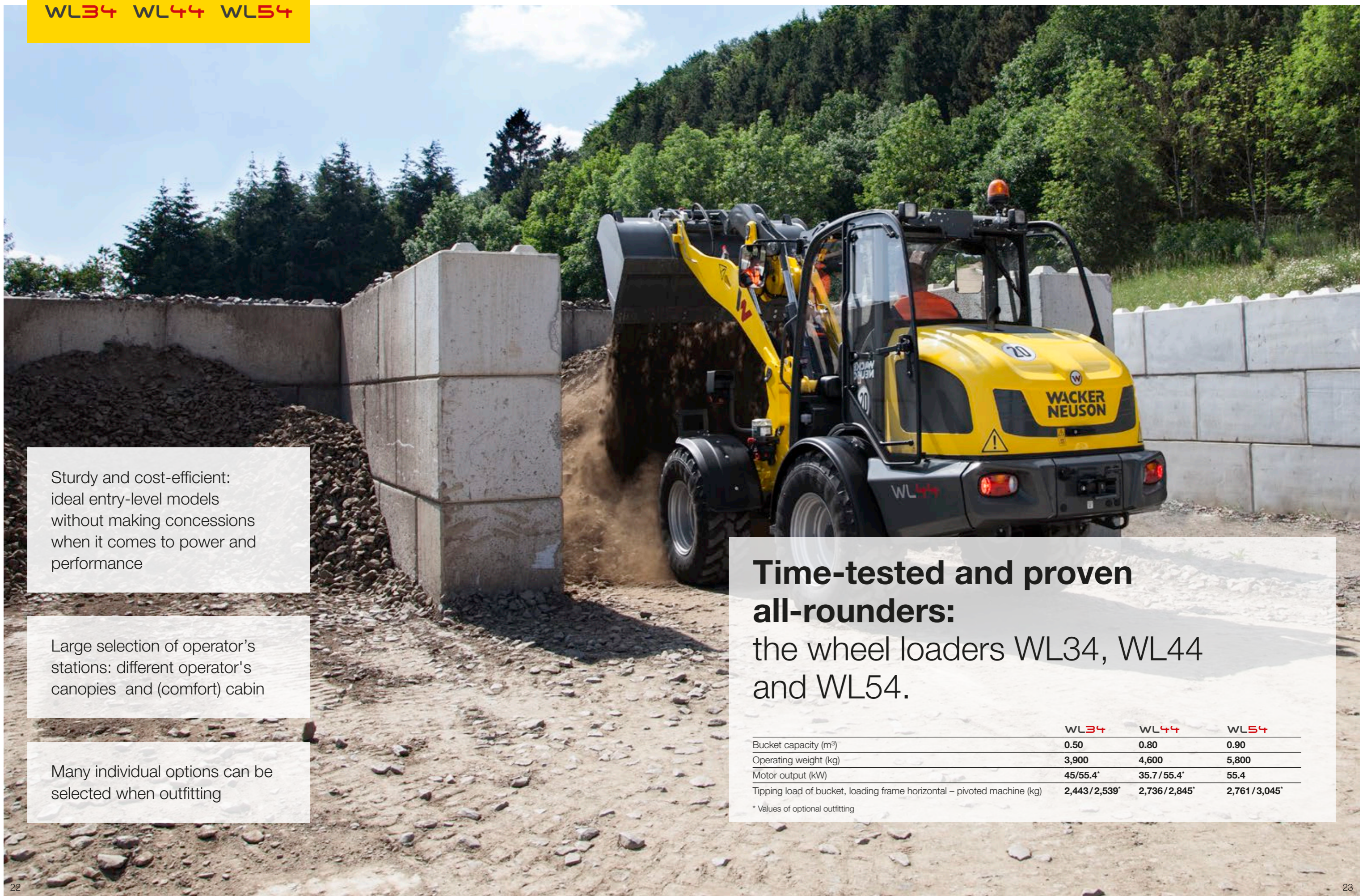


Full power for the hydraulics and at the same time reducing the travel speed:

The advantages are obvious: less wear of the service brake and optimal power distribution of the motor output. Stalling of the engine is not possible.

Effortless loading, even with high sides, thanks to the load arm with a large lift height and reach.





Sturdy and cost-efficient: ideal entry-level models without making concessions when it comes to power and performance

Large selection of operator's stations: different operator's canopies and (comfort) cabin

Many individual options can be selected when outfitting

Time-tested and proven all-rounders:
the wheel loaders WL34, WL44 and WL54.

	WL34	WL44	WL54
Bucket capacity (m³)	0.50	0.80	0.90
Operating weight (kg)	3,900	4,600	5,800
Motor output (kW)	45/55.4*	35.7 / 55.4*	55.4
Tipping load of bucket, loading frame horizontal – pivoted machine (kg)	2,443 / 2,539*	2,736 / 2,845*	2,761 / 3,045*

* Values of optional outfitting

Selectable operator stations (varies by model, see p. 47): operator's canopy (low/high), 2-door cabin, 1-door comfort cabin

Comfortable cabin
for fatigue-free work

Operator's canopy (low/high) also allows for low passages and thus a large range of applications

The optional air-conditioning system provides a pleasant working environment, even in warm temperatures

Large lift height due to the long loading system



Easy service access
for fast and efficient maintenance

Large selection of tires for the most diverse applications

Impressive performance dynamics – for the WL44, different motor outputs can be selected depending on the application

Powerful hydraulics with many options, such as high flow

Numerous attachments for versatile application

The extremely heavy-duty design ensures for the machine's durability



Everything that requires productive work.

You don't have to do without anything, even with our entry-level models – especially not when it comes to performance. The sturdy and sophisticated technology of our wheel loaders has been time-tested and proven in many applications. This makes them into particularly reliable performance machines on any construction site – a cost-benefit calculation that works.

Two lift cylinders.

For even more stability of the loader system, all wheel loaders from Wacker Neuson are equipped with two lift cylinders. In this way, the hydraulic power is optimally distributed to the load arm.



Z-kinematics.

The WL44 and WL54 are outfitted with Z-kinematics. This makes higher break out forces possible in the tipping movement – for powerful working and sufficient power reserves in any situation.



Comfort cabin.

The 1-door comfort cabin is spring-mounted at four points. In this way, impacts are optimally absorbed. From the entry on the left to the fully glazed vent window on the right, the cabin offers an excellent view of the attachment and the entire working area.

Ergonomics.

The seat and armrests can be individually adjusted. This way even large operators find the optimal operating position so they can work fatigue-free for a longer periods of time.

Uncomplicated maintenance.

The removable seat, the wide-opening engine hood as well as various maintenance covers make all service accesses easy to reach. This saves time and money in maintenance.





Powerful machines for heavy materials handling, with 40 km/h option for fast action

A high outfitting level of the machine offers comfort for productive and ergonomic working

The most powerful high flow hydraulics in the 6 to 7-ton class

Strong partners: the wheel loaders WL60 and WL70.

	WL60	WL70
Bucket capacity (m³)	1.00	1.10
Operating weight (kg)	5,930	7,140
Motor output (kW)	75/90*	90
Tipping load of bucket, loading frame horizontal – pivoted machine (kg)	3,031	3,926

* Values of optional outfitting

Load-sensing performance hydraulics
with 150 l/min flow for more operating
comfort and less fuel consumption

Optional flow-sharing increases
productivity and allows for the
simultaneous operation of several
functions

Various rear hydraulic options
for additional rear attachments,
such as a salt spreader in winter
application

If desired up to two electric
functions of attachments can
be controlled via joystick

Quick, favorably priced maintenance
due to the tiltable cabin



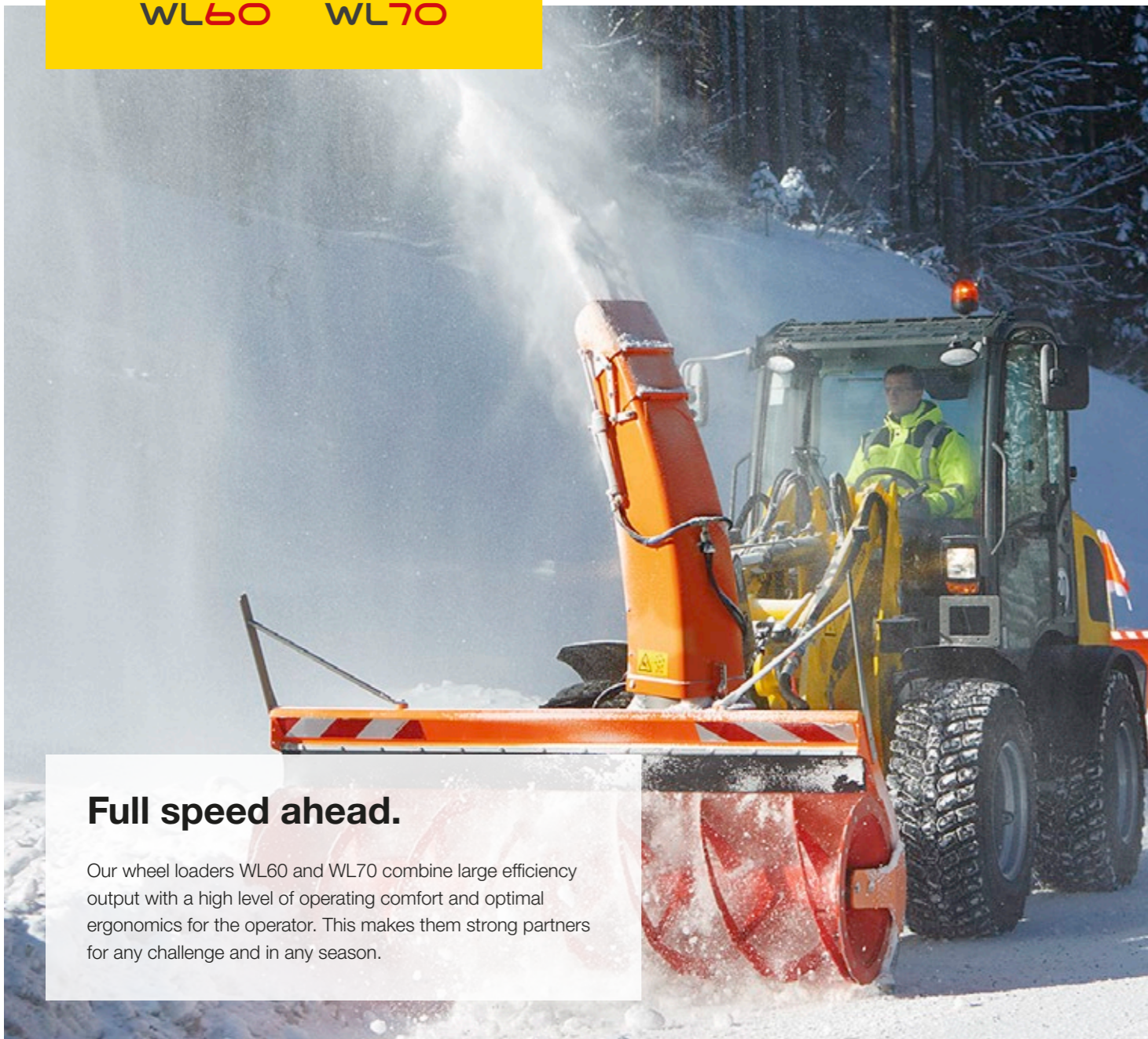
Jog dial: comfortable control of the
oil volume for sensitively working with
attachments

Trailer operation with up to 8-ton trailer load
possible with different approvals (attention: observe
country provisions)

Sturdy load arm design
with the largest lift height in its
performance range

Engine selection: the right engine for
every application area, meeting the latest
exhaust fumes standard

**Automatic speed-dependent lifting
arm damping** for comfortable road travel



Full speed ahead.

Our wheel loaders WL60 and WL70 combine large efficiency output with a high level of operating comfort and optimal ergonomics for the operator. This makes them strong partners for any challenge and in any season.

Joystick and jog dial.

Perfect control of machine and functions via a joystick of the latest generation. The innovative joystick with ergonomically-arranged, illuminated touch controls creates operator friendliness and multifunctionality.

If necessary, the flow rate of the hydraulic oil can be manually set using the "jog dial" control element. This is advantageous if the machine drives a hydraulic attachment, which does not require the full hydraulic performance of the machine. The operator can thus work with the machine and attachment very sensitively and in a resource-conserving way.



Ventilation as required.

The cabs feature large, wide-opening doors on both sides. The upper window can swing open completely and be locked. A gap ventilation is also possible.



Comfortable working environment.

The working environment is excellent, thanks to an efficiently working heating and ventilation system with a fan, fresh air filter and well-placed air nozzles. In warm temperatures, an air-conditioning system is recommended.

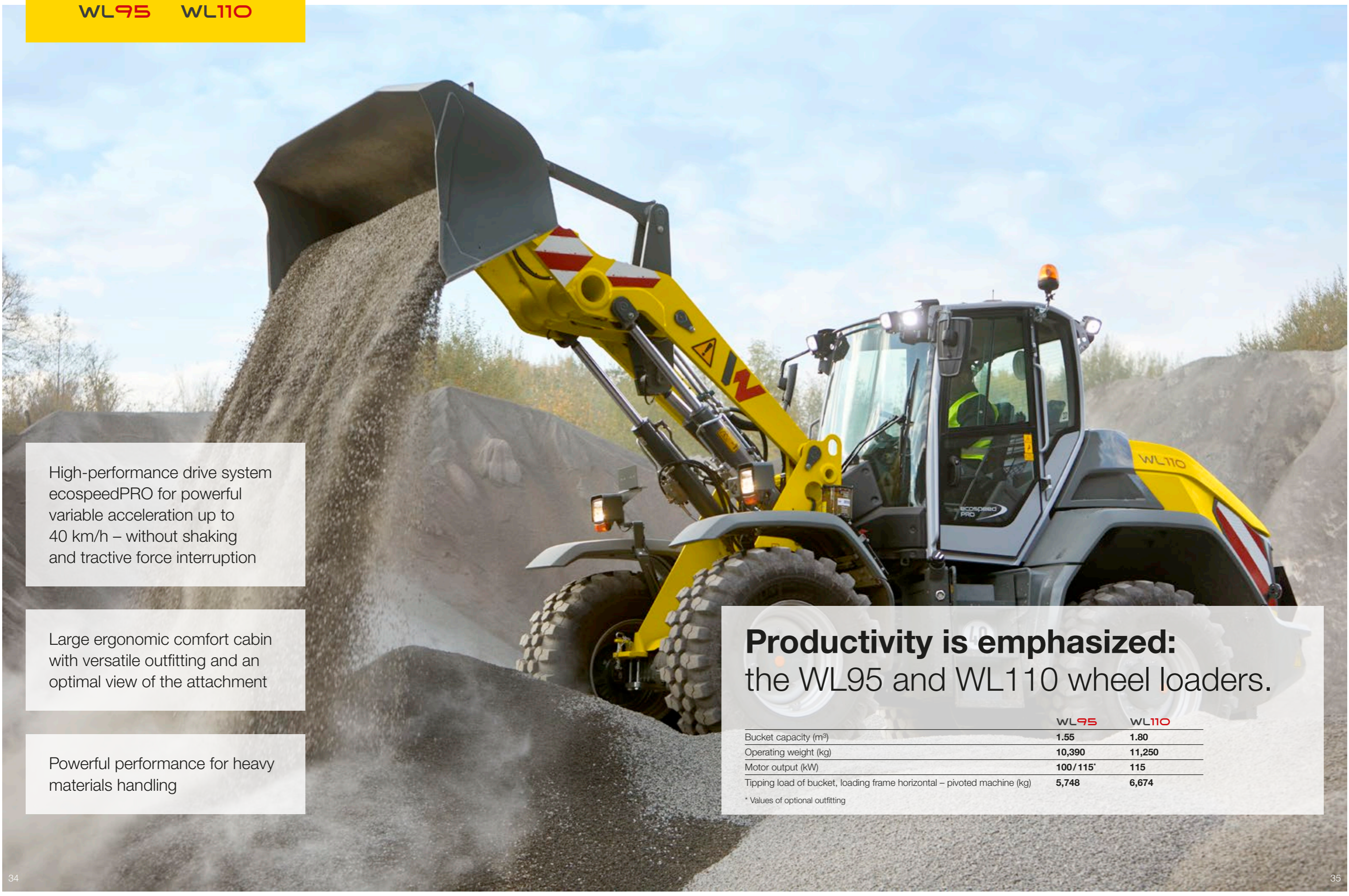


High level of stability – thanks to the optimal weight distribution.



Easy entry.

With a few steps, you can get into the machine's cabin comfortably. The large designed and slip-proof entry steps make this possible.



High-performance drive system ecospeedPRO for powerful variable acceleration up to 40 km/h – without shaking and tractive force interruption

Large ergonomic comfort cabin with versatile outfitting and an optimal view of the attachment

Powerful performance for heavy materials handling

Productivity is emphasized:
the WL95 and WL110 wheel loaders.

	WL95	WL110
Bucket capacity (m ³)	1.55	1.80
Operating weight (kg)	10,390	11,250
Motor output (kW)	100/115*	115
Tipping load of bucket, loading frame horizontal – pivoted machine (kg)	5,748	6,674

* Values of optional outfitting

Optimal service accesses
thanks to the wide-opening engine hood and removable mudguards

Extensive standard equipment
such as a large LCD display, rear-view camera, automatic air conditioning

Powerful load-sensing hydraulics
with 150 l/min (optional 180 l/min) for faster work cycles

The power output sets new standards for tipping load, thrusting force and lifting power

Hydraulic reversing fan
reverses the air flow at the push of a button, cleaning the radiator

Individual configuration of the engine, drive, operator's cab and hydraulics

Trailer operation up to 18 tons for all common coupling systems

Excellent all-round visibility thanks to the fully glazed cabin and plenty of headroom and freedom of movement

Various drive modes can be selected

Digging bucket of 1.8 m³ for large volume of material handling

Strong load-sensing hydraulics of 180 l/min

Strong engine with 156 hp in the standard version



Good all-round visibility and an ergonomic working area.

Plenty of legroom, clearly arranged switches, comfortable operator's seat and optimal view of the attachment. A working area that motivates and fully supports the operator. The console with the multifunctional joystick "jog dial," electronic manual throttle and inching were of course realized to be co-sprung with the seat to allow for comfortable driving and working.



Everything in view with the digital 7" display:

in addition to standard displays such as temperature, tank filling, or operating hours, active functions, such as electrical functions, the continuous operation of the 3rd control circuit or the activated differential lock.

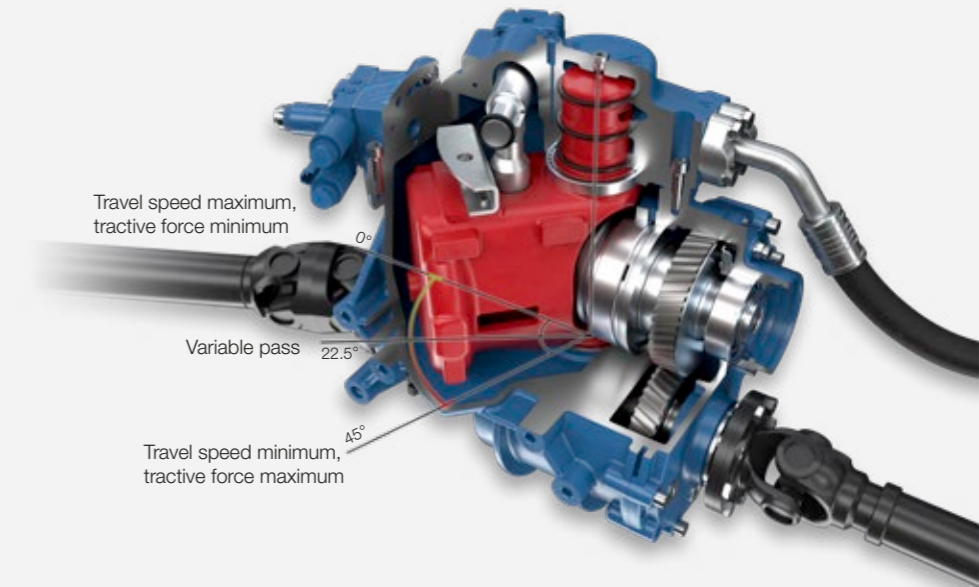


Hydraulic oil volume adjustment easily via "jog dial:"

if an attachment does not require the full hydraulic performance, the flow volume can be reduced manually. In this way, the operator can work sensitively with the machine and attachment while saving resources.

New powerful transmission.

The ecospeedPRO is a variable hydrostatic transmission, which achieves higher tractive forces and travel speeds than previously developed solutions, all while retaining the advantages of previous drives with respect to compactness, energy efficiency and operator comfort. ecospeedPRO allows for speeds of up to 40 km/h without shifting. This results in a comfortable driving style, since no tractive force interruptions occur nor can shifting jerks be felt.



Optimal service accesses:

the WL95 and WL110 offer easy-to-access maintenance flaps and the mudguards can be removed. This allows easy access to the engine, hydraulic system, and electronics. This greatly facilitates the inspection and maintenance of the machine. The engine hood can be opened widely, thereby allowing for optimal access.



Rear articulated joint and oscillating axle:

tight curves, small slopes – every construction site is different. In order to bring the transported material safely to the destination, the WL95 and WL110 are equipped with an articulated joint and an oscillating axle in the rear. This ensures the optimum maneuverability and traction in any situation. At 40°, the steering angle is generous, the turning circle over tires is 4.90 m and the inner radius is 2.45 m.



Trailer operation up to 18 tons:

wL95 and WL110 have a self-rescue coupling as standard. In addition, the following coupling possibilities are available: automatic ball hitch, K50 ball hitch (car trailer), Auto hitch, Piton Fix as well as CUNA D3. To safely move trailer loads, there is both a two-line pneumatic brake as well as a hydraulic trailer brake.

Attachments.

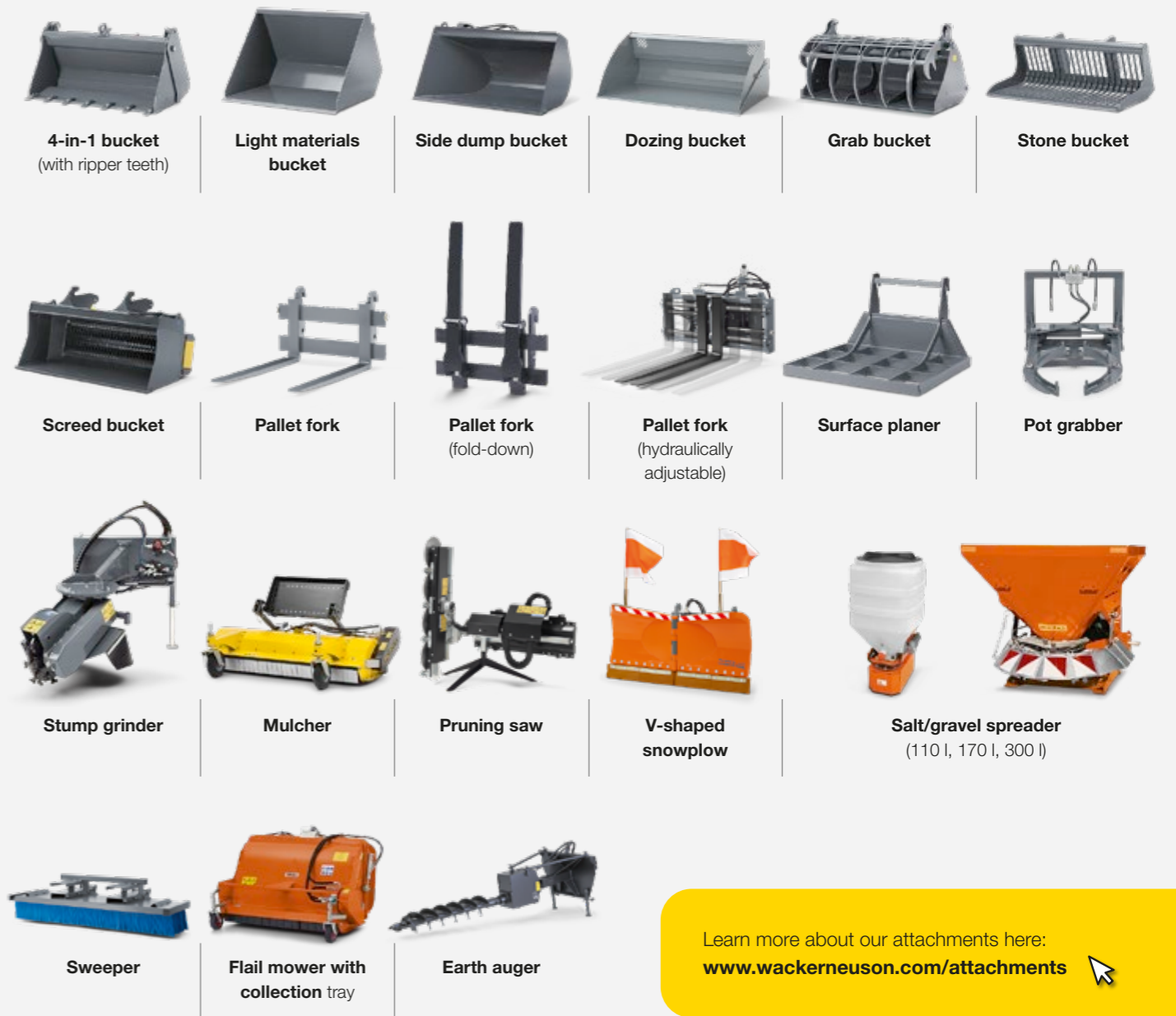


The right attachment for every machine.

The tasks for wheel loaders are varied and so the attachments from Wacker Neuson are also varied. With our comprehensive and sophisticated product range, you will make a multifunctional machine out of any model. And through the hydraulic quickhitch system, the attachments can easily be replaced from your seat.

The exact specifications and availabilities of attachments differ depending on the model and country. Your Wacker Neuson partner is happy to help you.

Product range for wheel loaders (selection).



Learn more about our attachments here:
www.wackerneuson.com/attachments

Effective green maintenance:
flail mower with collection tray.



Reliable, even for heavy loads:
the width-adjustable pallet fork.

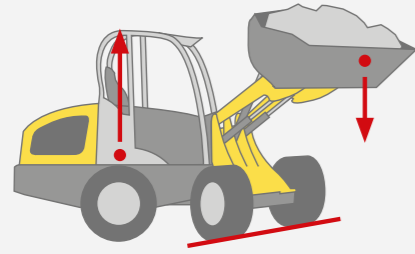


Hydraulic equipment change directly from the operator's seat.

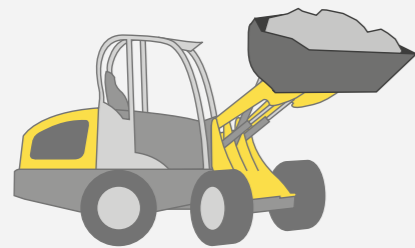


For all wheel loaders from Wacker Neuson many receptacles are possible in addition to their own attachment receptacles. Thus, you can use different attachments. You can find more information at your Wacker Neuson distributor.

Tipping load briefly explained.



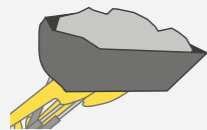
The tipping load provides the maximum load weight of a machine, including attachment. If the value is reached, the rear wheels will lose contact with the ground.



Wacker Neuson measures the tipping load as per the standard ISO 14397 - EN474-3. The following values are specified here:

- Tipping load with bucket – loading frame, machine straight
- Tipping load of bucket – loading frame, machine pivoted
- Tipping load with pallet fork – loading frame, machine straight
- Tipping load with pallet fork – loading frame, machine pivoted

Attention: the tipping load changes due to the machine's outfitting (e.g. rear weight, cabin or operator's canopy, etc.) and due to different attachments (e.g. buckets with different dead weight).



The maximum possible bucket capacity is determined via the tipping load and the payload:

$$\text{Payload} = \frac{\text{Tipping load pivoted}}{2}$$

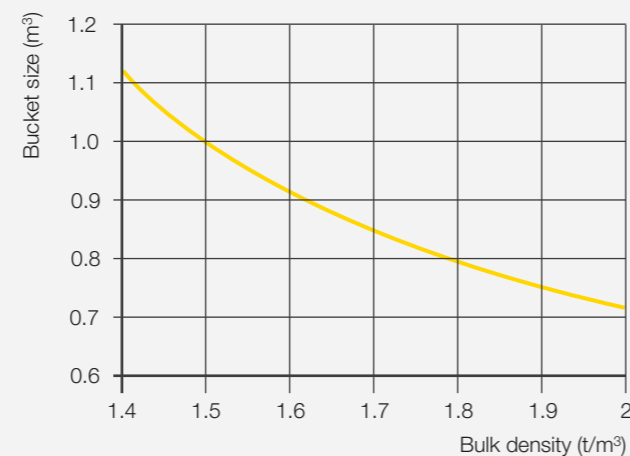
$$\text{Bucket capacity} = \frac{\text{Payload (t)}}{\text{spec. material weight (t/m}^3\text{)}}$$

Bulk material and bucket selection.

Every bulk material has a different density and thus a different weight with the same quantity. The following tables provide you with an overview of the different bulk material and the corresponding bucket selection.

BULK MATERIAL	BULK DENSITY t/m ³
Moist soil	2.10
Dry soil	1.50
Lime	1.60
Mortar	2.20
Dry sand	1.65
Moist sand	2.00
Dry gravel	2.00
Moist gravel	2.00
Waste paper	1.10
Household trash	0.70
Loose snow	0.13
Moist snow	0.65
Logs	0.80
Wood chips	0.35
Wood pellets	0.65
Granite	1.80
Sandstone	2.40
Slate	2.20
Bauxite	1.40
Broken plaster	1.80
Coke	0.50
Broken glass waste	1.40
Whole glass waste	1.00
Compost	1.00
Bulky waste	1.00

Bucket selection table



Tire treads.

The right wheel loader tires play an important role in specific applications. Everything runs perfectly if the tires are optimally matched to the ground surface and application area. Seven treads are available for you to choose from.

The exact specifications and availabilities of tires differ depending on the model and country. Your Wacker Neuson partner is happy to help you.

RP tread (grass)

- Gentle driving on the ground due to the large contact surface
- For use on lawns and green areas

AS tread (tractor)

- Tapered lamellas
- For smeary and very dirty surfaces
- For earthworks, green areas (and loamy ground)

EM tread (earth moving)

- Parallel-running lamellas
- Large contact surface and therefore good thrusting force transmission and high running smoothness on the street
- For earthworks, sand, gravel, crushed stone, asphalt



MPT tread (industry)

- Very broad application spectrum
- Good traction in uneven ground conditions
- Allows for quick road crossings
- For asphalt, gravel, crushed stone, industry

Multi-use tread

- For varied year-round use and various climate conditions
- Good traction on loose surfaces in the summer
- Good stability on snow and slippery driving surfaces during the winter
- For ice/snow, asphalt, industry, municipalities

SureTrax

- Large contact area
- High lift capacity
- Ideal for firm and other hard surfaces
- For asphalt, paving stones, hard and firm ground

Bibload

- High level of running smoothness and long service life due to the large contact surface with the ground
- Good traction due to the offset tread blocks
- High level of wear resistance
- For asphalt, industry and firm ground conditions

Standard equipment & options

WHEEL LOADERS

	WL20E	WL20	WL25	WL28	WL32	WL34	WL38	WL44	WL52	WL54	WL60	WL70	WL95	WL110
ENGINE														
Perkins 403J-11 18.4 kW	-	●	-	-	-	-	-	-	-	-	-	-	-	-
Perkins 403D-15 23.4 kW	-	○	-	-	-	-	-	-	-	-	-	-	-	-
Perkins 403J-17T 18.4 kW	-	-	●	-	-	-	-	-	-	-	-	-	-	-
Perkins 404D-22 35.7 kW	-	-	-	●	-	-	-	●	-	-	-	-	-	-
Perkins 404D-22 36.3 kW	-	-	-	-	●	-	●	-	-	-	-	-	-	-
Perkins 404F-22T 44.7 kW	-	-	-	-	○	-	-	-	-	-	-	-	-	-
Deutz TCD 2.9 L4 45 kW S5 DOC/DPF	-	-	-	-	-	●	-	-	-	-	-	-	-	-
Deutz TCD 2.9 L4 55.4 kW S5 DOC/DPF	-	-	-	-	-	○	○	○	●	●	-	-	-	-
Perkins 854F-E34TA 75 kW DOC/SCR	-	-	-	-	-	-	-	-	-	-	●	-	-	-
Perkins 854F-E34TA 90 kW DOC/SCR	-	-	-	-	-	-	-	-	-	○	●	-	-	-
Deutz TCD 3.6 S5 100 kW DOC/DPF/SCR	-	-	-	-	-	-	-	-	-	-	-	-	○	-
Deutz TCD 4.1 S5 115 kW DOC/DPF/SCR	-	-	-	-	-	-	-	-	-	-	-	-	○	●
Battery/electric motor drive system	●	-	-	-	-	-	-	-	-	-	-	-	-	-
LIGHTING														
Rotating beacon	○	○	○	○	○	○	○	○	○	○	○	○	○	○
Work lights, 2 front, 2 rear (WL20/WL20e: 2 front, 1 rear; WL95: 4 front, 2 rear)	●	●	●	●	●	●	●	●	●	●	●	●	●	●
Work lights LED, 2 front, 2 rear (WL20/WL20e: 2 front, 1 rear; WL95: 4 front, 2 rear side, 2 rear)	○	○	○	○	○	○	○	○	○	○	○	○	○	○
ELECTRONICS														
Front outlet, triple-pole	○	○	○	○	-	○	-	○	-	○	-	-	-	-
Front outlet, 7-pole	-	○	-	-	○	-	○	○	○	○	○	○	-	-
Front outlet, 13-pole	-	-	-	-	-	-	-	-	-	-	-	-	○	○
Rear plug receptacle, 7-pole	-	○	○	○	○	-	○	○	○	○	○	○	○	○
Front outlet, with joystick control	-	-	-	-	○	-	○	○	○	○	○	○	○	○
Rear outlet, Triple-pole	-	-	-	-	○	○	○	-	○	-	○	○	○	○
FRONT AREA HYDRAULICS														
Depressurized front return flow	○	○	○	○	○	○	○	○	○	○	○	○	○	○
3. control circuit, front DN10	●	●	●	-	-	-	-	-	-	-	-	-	-	-
3. control circuit, front DN12	-	-	○	●	●	●	●	●	●	●	●	●	●	●
3. comfort control circuit	○	○	○	○	-	○	-	○	-	○	-	-	-	-
4. comfort control circuit	○	○	○	○	-	-	-	○	-	○	-	-	-	-
3. control circuit, electrically proportional	-	-	-	-	●	○	●	○	●	○	●	●	●	●
4. control circuit, parallel/LS	-	-	-	-	●	-	●	○	●	○	●	○	○	○
4. proportional-controlled control circuit	-	-	-	-	○	-	○	○	○	○	○	○	○	○
Work hydraulics of large pump (depending on model, between 58.5 l and 103 l)	-	-	-	○	○	○	○	○	○	○	-	-	-	-
High flow single action	-	○	-	-	○	-	○	○	○	○	-	-	-	-
High flow double action 150 l: Load-sensing	-	-	-	-	-	-	-	-	-	-	○	○	○	○
High flow double action 180 l: Load-sensing	-	-	-	-	-	-	-	-	-	-	-	○	○	○
3./4. circuit flow sharing	-	-	-	-	-	-	-	-	-	-	●	●	-	-

WHEEL LOADERS

	WL20E	WL20	WL25	WL28	WL32	WL34	WL38	WL44	WL52	WL54	WL60	WL70	WL95	WL110
REAR AREA HYDRAULICS														
Hydraulic connection, rear, single-acting	-	○	○	○	○	○	-	○	-	○	-	-	○	○
Rear hydraulic connection, double-acting	-	○	-	○	○	-	○	-	○	-	○	○	○	○
Rear hydraulic connection, electrical valve	-	-	○	-	-	-	-	-	-	-	-	-	-	-
Unpressurized overflow in rear	-	-	○	○	○	-	○	○	○	○	○	○	○	○
Rear hydraulic connection, additional, single-acting	-	-	-	-	○	-	○	○	○	○	○	○	○	○
Rear hydraulic connection, additional, dual-acting	-	-	-	○	○	-	○	-	○	-	○	○	○	○
DRIVER'S CABIN														
Fold-down operator's canopy (EPS)	○	○	○	○	-	-	-	-	-	-	-	-	-	-
Hydraulically lowerable operator's canopy (EPS Plus)	○	○	-	-	-	-	-	-	-	-	-	-	-	-
Operator's canopy, low	-	-	-	-	-	○	-	○	-	-	-	-	-	-
Operator's canopy, high	●	●	●	●	●	●	-	●	-	●	-	-	-	-
Low cabin	-	-	-	-	-	○	○	-	○	-	-	-	-	-
High cabin	-	○	○	○	○	○	-	○	-	○	-	-	-	-
High cabin comfort	-	-	-	-	-	-	●	-	●	-	●	●	●	●
High cabin comfort, single-door	-	-	-	-	-	-	-	○	-	○	-	-	-	-
OTHER														
Air-conditioning system	-	-	-	-	○	-	○	○	○	○	○	○	○	○
Load arm damping	-	-	○	○	○	○	○	○	○	○	○	○	○	○
Central lubrication system	-	○	○	○	○	○	○	○	○	○	○	○	○	○
Manual throttle *	-	-	-	-	○	-	○	○	○	○	○	○	○	○
Hand inching	-	-	○	○	○	-	○	○	○	○	○	○	○	○
Engine preheating 230 V	-	○	○	○	○	○	○	○	○	○	○	○	○	○
Approval as a towing vehicle DE**	-	-	-	○	○	○	○	○	○	○	○	○	○	○
Low front carriage	-	-	○	●	-	-	-	●	●	-	-	-	-	-
Automatic bucket return	-	-	-	-	-	-	-	-	-	-	-	-	○	○
ecospeedPRO drive	-	-	-	-	-	-	-	-	-	-	-	-	○	○
Reversing fan	-	-	-	-	-	-	-	-	-	-	-	-	●	●
Radio	-	○	○	○	○	○	○	○	○	○	○	○	○	○

● Standard ○ Option - Not available

* Not available with TCD2.9DPF engine.

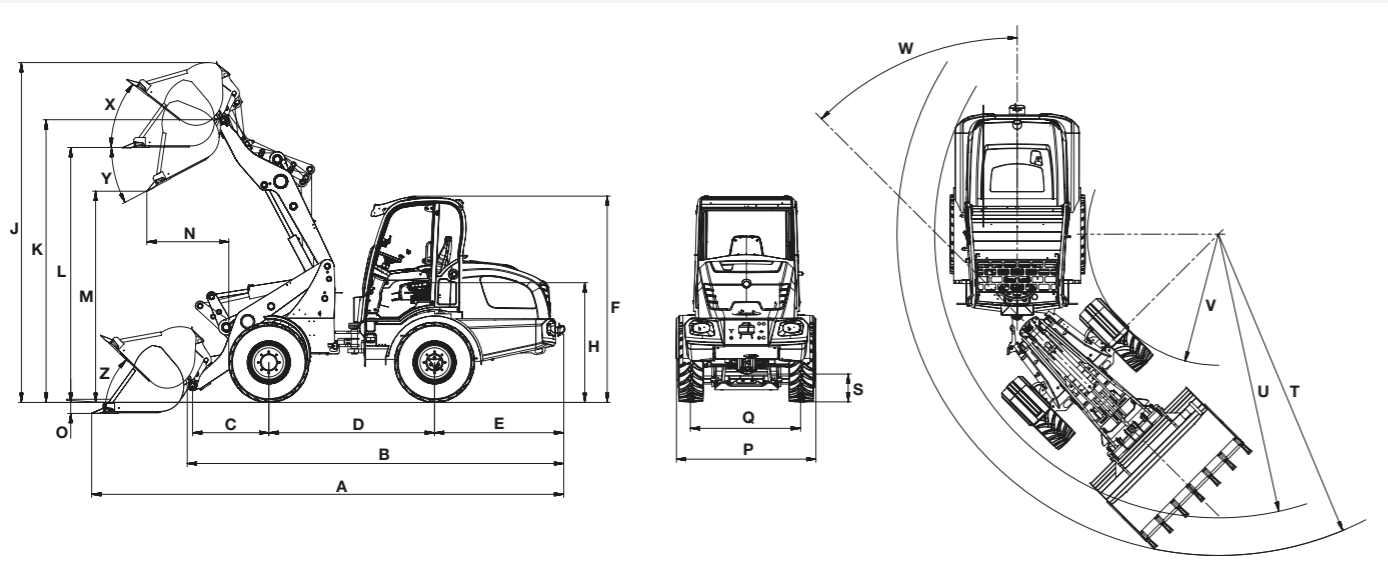
** Please contact Wacker Neuson for other countries.

Dimensions

WHEEL LOADER

		WL20e	WL20	WL25	WL28	WL32	WL34	WL38	WL44	WL52	WL54	WL60	WL70	WL95	WL110	
DIMENSIONS		UNIT														
Standard tires		-														
Standard bucket		Digging bucket 1,150 mm, 0.2 m ³														
A	Overall length	mm	3,721	3,721	4,087	4,559	4,755	5,010	5,138	5,420	5,420	5,760	5,898	5,898	6,500	6,500
B	Total length without bucket	mm	3,063	3,063	3,302	3,730	4,022	4,260	4,281	4,760	4,760	4,828	4,780	4,780	5,610	5,610
C	Center of axle up to the bucket pivot point	mm	508	508	532	670	675	675	675	1,040	1,040	991	991	991	1,200	1,200
D	Wheel base	mm	1,468	1,468	1,612	1,764	1,952	2,045	2,045	2,110	2,110	2,150	2,150	2,150	2,660	2,660
E	Rear overhang	mm	975	975	1,045	1,182	1,290	1,430	1,516	1,530	1,530	1,531	1,676	1,676	1,520	1,520
F	Height (min./max.)	mm	1,948-2,361	1,880-2,302*	1,877-2,291*	1,870-2,387	2,336/2,348*	2,220/2,420*	2,371/2,548*	2,332/2,470/ 2,528*	2,498/2,675*	2,495/2,532*	2,693	2,693	3,060	3,060
H	Seat height	mm	1,245	1,225	1,259	1,255	1,354	1,270	1,204	1,470	1,590	1,495	1,609	1,609	1,940	1,940
J	Total working height	mm	3,294	3,274	3,582	3,212	3,715	3,930	4,007	3,890	3,930	4,561	4,409	4,536	4,780	4,780
K	Max. height of the bucket pivot point	mm	2,713	2,693	2,862	2,560	3,208	3,270	3,251	3,200	3,240	3,671	3,686	3,686	3,820	3,820
L	Load-over height	mm	2,444	2,424	2,573	2,241	2,954	2,970	2,892	2,940	2,980	3,335	3,375	3,375	3,550	3,550
M	Dumping height	mm	2,031	2,011	2,047	1,700	2,425	2,460	2,379	2,430	2,470	2,864	2,841	2,840	2,860	2,860
N	Reach with M	mm	330	350	337	519	252	344	155	665	625	875	799	799	950	950
O	Scraping depth	mm	94	94	50	132	50	43	120	136	96	114	74	73.5	136	136
P	Overall width	mm	1,076	1,076	1,210	1,245	1,414	1,550	1,570	1,830	1,810	1,750	1,829	1,829	2,390	2,390
Q	Track width	mm	810	810	940	940	1,148	1,260	1,200	1,500	1,400	1,432	1,422	1,422	1,820	1,820
S	Ground clearance	mm	207	207	250	271	275	320	312	367	370	352	375	375	500	500
T	Max. radius outside	mm	2,681	2,681	2,912	3,215	3,534	3,610	3,652	4,270	4,240	4,242	4,072	4,341	5,370	5,370
U	Radius on the outer edge	mm	2,356	2,356	2,590	2,845	3,171	3,350	3,317	3,870	3,850	3,785	3,686	3,686	4,900	4,900
V	Inside radius	mm	1,219	1,219	1,330	1,554	1,731	1,680	1,640	1,990	1,910	1,931	1,666	1,666	2,450	2,450
W	Articulation angle	Degrees	45	45	45	44	45	45	45	40	40	42	45	45	40	40
X	Rollback angle at max. lift height	Degrees	50	50	48	47	49	49	43	71	71	44	33	33	56	56
Y	Max. angle for bucket emptying	Degrees	38	38	42	41	44	43	42	45	45	28	33	33	45	45
Z	Rollback angle on the ground	Degrees	48	48	46	50	39	43	41	43	43	38	39	39	45	45

* Depending on operator's cab (cabin, cabin low / high, operator's canopy fixed, operator's canopy low / high, operator's canopy fold-down, operator's canopy hydraulically lowerable)



Technical data

WHEEL LOADER

		WL20e	WL20	WL25	WL28	WL32	WL34	WL38	WL44	WL52	WL54	WL60	WL70	WL95	WL110
ENGINE		UNIT													
Manufacturer	–	–	Perkins	Perkins	Perkins	Perkins	Deutz	Perkins (Deutz)	Perkins (Deutz)	Deutz	Deutz	Perkins	Perkins	Deutz	Deutz
Max. motor output (optional)	kW	–	18.4 (23.4)	18.4	35.7	36.3 (44.7)	45 (55.4)	36,3 (55,4)	35,7 (55,4)	55.4	55.4	75 (90)	90	100 (115)	115
Max. motor output (optional)	HP	–	25 (32)	25	49	50 (60)	61 (75)	50 (75)	50 (75)	75	75	102 (122)	122	136 (156)	156
At max. rpm (optional)	rpm	–	2,800 (2,600)	2,800	2,600	2,800	2,300	2,800 (2,300)	2,600 (2,300)	2,300	2,300	2,200	2,200	2,300	2,300
Displacement (optional)	cm³	–	1,131 (1,496)	1,662	2,216	2,216	2,900	2,216 (2,900)	2,216 (2,900)	2,900	2,900	3,400	3,400	3,621 (4,038)	4,038
WEIGHTS		UNIT													
Operating weight FSD/cabin	kg	2,350	2,000/2,150*	2,380/2,520*	3,050/3,120*	3,400	3,900	4,200/4,300**	4,600	5,100	5,800	5,930	7,140	10,390	11,250
Break out force (according to ISO 14397-2)	daN	2,170	1,280	1,989	2,758	4,269	4,427	4,128	5,620	5,620	3,513	4,034	4,032	6,237	6,036
Bucket capacity	m³	0.2	0.2	0.35	0.42	0.45	0.6	0.6	0.85	0.85	1.0	1.0	1.1	1.55	1.8
Bucket tipping loads (according to ISO 14397 - EN474-3) Horizontal loading frame – Machine straight	kg	1,509	1,215/1,437*	1,393/1,958*	1,985/2,388*	2,032/2,269*	2,925/3,055*	2,983/3,719**	3,200/3,327*	3,949	3,270/3,583*	3,674	4,762	6,529	7,739
Bucket tipping load (according to ISO 14397 - EN474-3) Horizontal loading frame – Machine pivoted	kg	1,251	977/1,206*	1,144/1,703*	1,669/2,011*	1,692/1,898*	2,443/2,539*	2,494/3,113**	2,736/2,845*	3,416	2,761/3,045*	3,031	3,926	5,748	6,674
Pallet fork tipping load (according to ISO 14397 - EN474-3) Horizontal loading frame—Machine straight	kg	1,112	904/970*	1,096/1,536*	1,656/1,981*	1,731/1,908*	2,615/2,716*	2,570/3,170*	2,478/2,562*	3,055	3,035/3,270*	3,344	4,254	5,371	6,851
Pallet fork tipping load (according to ISO 14397 - EN474-3) Horizontal loading frame—Machine pivoted	kg	916	719/866*	975/1,339*	1,392/1,677*	1,459/1,605*	2,200/2,276*	2,173/2,662*	2,126/2,204*	2,555	2,599/2,813*	2,791	3,559	4,728	5,946
Operator's cab (optional)	–	FSD (EPS Plus, EPS, cabin)	FSD (EPS Plus, EPS, cabin)	FSD (EPS, cabin)	FSD (EPS, cabin)	FSD (cabin)	FSD (cabin)	Cab	FSD (cabin)	Cab	FSD (cabin)	Cab	Cab	Cab	Cab
Travel speed (optional)	km/h	0–15	0–20 (30)	0–20 (30)	0–20 (28)	0–20 (28)	0–20 (28)	0–20 (28)	0–20 (30)	0–20 (30)	0–20 (30)	0–20 (30/40)	0–20 (30/40)	0–20 (40)	0–20 (40)
Fuel tank capacity	l	–	20	45	50	65	55	65	82	82	82	105	105	140	140
Hydraulic oil tank capacity	l	18.5	20	27	30	35	65	50	66	66	66	95	95	125	125
HYDRAULIC SYSTEM		UNIT													
Drive hydraulics working pressure (optional)	bar	–	330 (450)	450	450	450	450	445	450	450	445	445	445	480	480
Work hydraulics discharge volume (optional)	l/min	32	30.8 (36.4)	45	49.4	56 (63–100)	57.5 (73.6)	56 (63–116)	58.5 (64–115)	73.6 (83–115)	64	100 (115/150)	100 (115/150)	150 (180)	180
Work hydraulics working pressure	bar	225	225	185	220	210	210	210	220	220	210	210	210	250	250
DRIVE SYSTEM		UNIT													
Drive type/drive system	–	Electrically via universal joint shaft	Hydrostatic via universal joint shaft	Hydrostatic via universal joint shaft	Hydrostatic via universal joint shaft	Hydrostatic via universal joint shaft	Hydrostatic via universal joint shaft	Hydrostatic via universal joint shaft	Hydrostatic via universal joint shaft	Hydrostatic via universal joint shaft	Hydrostatic via universal joint shaft	Hydrostatic via universal joint shaft	Hydrostatic via universal joint shaft	Hydrostatic via universal joint shaft	Hydrostatic via universal joint shaft
NOISE CHARACTERISTIC VALUES		UNIT													
Average sound power level LwA	dB (A)	91.8	98.4	100.1/99.7	99.9	99.8	99.5	99.3	100.2	100.3	100.5	101	101	100.7	100.7
Guaranteed sound power level LwA	dB (A)	92	101	101	101	101	101	101	101	101	101	103	103	102	102
Specified sound pressure level LpA	dB (A)	76	84	85/82	82	82	75	78	78	78	75	78	78	70	70

* Values with cabin and optional outfitting ** Values with optional Deutz engine

BATTERY

		WL20e	WL20e
		Standard battery	Optional battery
		UNIT	
Battery voltage	V	48	48
Rated capacity	Ah	240	310
Battery weight (±5%)	kg	450	579
Charging time	h	6	8
Running time under hard long-time application with heavy materials handling, uninterrupted operation	h	1.5*	2.1*
Running time under normal activities , uninterrupted operation	h	2–3.5*	2.8–4.5*
Running time under normal activities with interruptions (30 min. driving, 30 min. standstill)	h	up to 4*	up to 5*
Motor drive system	kW	6.5	6.5
Motor work hydraulics	kW	9	9

The running times of the battery are strongly dependent on the respective application conditions, the task and the driving style. This may also mean that a longer running time can be achieved. The specified running times may also be underrun of in extreme cases.
An interrupted operation (e.g. 30 min. driving, 30 min. standstill) prolongs the running time of the battery.

The Wacker Neuson product range includes over 300 different product series with different variants. The product data may vary accordingly with the selection of different options. Not all Wacker Neuson products listed or shown here are however available or allowed in all countries. The Wacker Neuson products shown are examples and as such are subject to changes. We are happy to make you a specific offer upon request!

Reproduction only with the written approval of Wacker Neuson.

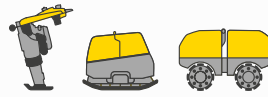
© Wacker Neuson SE

Your everyday work day is full of challenges. We have the right solutions and help you to be ahead of the competition. We offer you everything you need for this purpose: **Wacker Neuson – all it takes!**

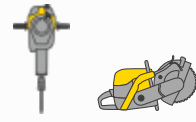
Products



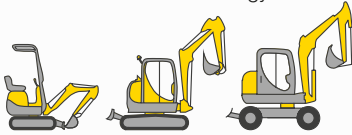
Concrete technology



Compaction



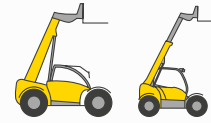
Demolition technology



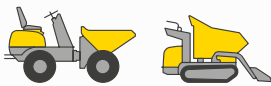
Excavators



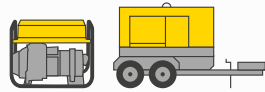
Wheel loaders



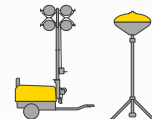
Telehandlers



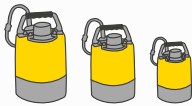
Dumpers



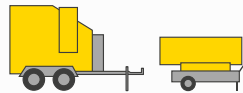
Generators



Lighting



Pumps



Heaters



Used equipment

Services



Financial solutions

Uncomplicated, transparent and individual financing options for you.



Repair & maintenance

Excellent and fast maintenance. Repairs with original spare parts.



Academy

We expand your know-how: practice-oriented and within an ideal learning environment.



EquipCare

Everything about the machines at a glance, via app or PC – EquipCare.



Rental

Protect your liquidity and rent top-maintained construction equipment as needed.



Concrete specialists

Our specialists advise you in all project stages.



eStore

Buy original spare parts online conveniently – for all Wacker Neuson product groups.



Spare parts

Every minute counts:

Within the shortest period of time, we deliver over 150,000 genuine Wacker Neuson spare parts to your construction site.

www.wackerneuson.com



WN.EMEA.10094.V08.EN-US